

SPECIFICATIONS

Model	AS150
Capacity	1,200 ppd
Voltage	240 HVAC, 3 Phase, 60 Hz
Amps	48 Amps
Breaker Size	60 - 75 Amps
Weight: Unit only Operating	79 lbs.
Warranty	5 Years on all parts

FEATURES

High capacity	One unit can provide 1200 pints per day or 150 gallons per day.
Electrode type humidifier	Generates steam by energizing two electrodes that extend into the steam cylinder. Current flowing in between the electrodes causes the water to boil creating steam.
Water requirements	The Anden Steam Humidifier uses standard potable water or softened water. Reverse Osmosis "RO" or deionized water is not recommended. Water conductivity 125 - 1250 µS/cm or .125 - 1.25 EC.
Easy to install	The Fan Pack is design to be mounted directly on top of the steam humidifier. The Fan Pack can be remotely mounted with steam hose part number 5940 (sold separately).
Accessories included AS150	The steam humidifier, fan pack, Vapor-logic® control, RH Transmitter, 7" steam hose and 2' of drain tubing.
Display panel	Provides power switch for operation for on/off operations. Display panel to show fill, drain, steam, operations and diagnostics.
Internal control board	Manages the complete operation of the humidifier. Fills and drains to maintain proper amperage draw, water level and notifies when service is required.
Back flow protection	Air gap in the fill cap prevents pressure buildup.
Water level sensor	Manages the water level in the steam cylinder to prevent overfilling.
Automatic drain and fill cycle	Unit flushes and fills periodically to maintain the proper conductivity.
Optional drain tempering	Unit uses cold inlet water to temper the cylinder water reducing the drain water temperature below 140°F to protect PVC piping and condensation pumps.
End-of-season drain	After a 72-hour period with no call for humidity, the humidifier will drain the water from the cylinder. Unit will remain in stand-by mode until next call for humidification.
Operating time monitor	Accumulates actual humidifier run time to activate periodic drain and fill cycles, end-of-season drain function and monitors the life of cylinder.
Easy to maintain	No cleaning or scrubbing, simply remove the steam cylinder and replace.



AS150

► PRINCIPLE OF OPERATION

The Anden High-Capacity Steam Humidifier operates utilizing electrode technology: current flowing between two electrodes in the disposable steam cylinder boils water to generate steam. Drain and fill valves in the humidifier work together to maintain the correct water level in the canister to satisfy the demand for humidity based on the electrical conductivity of the water.

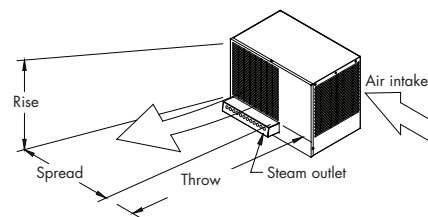
► APPLICATION

The AS150 is designed to deliver humidity to any facility. The AS150 disperses steam directly into the area to be humidified through a dedicated fan pack that is powered by the humidifier itself.

LINE CURRENTS AND RECOMMENDED FUSING FOR ANDEN AS150 SERIES HUMIDIFIER

Model	Nominal Steam Capacity		kW	Phase	Volts	Maximum line current (amps)	Recommended fusing (amps)
	PPD	kg/h					
AS150	1200	22	16.5	3	240	48	60 Amp Min.

AS150 STEAM BLOWER RISE, SPREAD, AND THROW



ANDEN AS150 HUMIDIFIER AND STEAM BLOWER MINIMUM NON-WETTING DISTANCES

Model	Nominal steam capacity		30% RH @ 70 °F (21 °C)			40% RH @ 70 °F (21 °C)			50% RH @ 70 °F (21 °C)			60% RH @ 70 °F (21 °C)		
	lbs/hr	kg/h	Rise	Spread	Throw	Rise	Spread	Throw	Rise	Spread	Throw	Rise	Spread	Throw
AS150	50	22	3.3 ft	3.1 ft	9.6 ft	3.8 ft	3.5 ft	10.7 ft	4.4 ft	4.0 ft	12.0 ft	4.8 ft	4.7 ft	14.0 ft

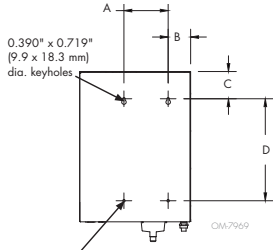
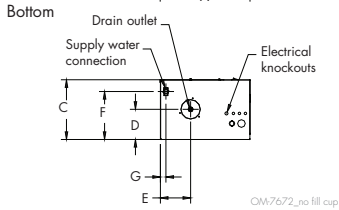
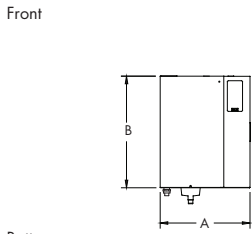
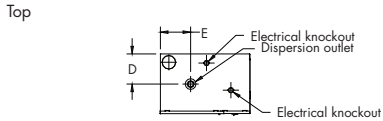
Rise: Minimum non-wetting height above the steam outlet of the AS150 steam blower

Spread: Minimum non-wetting width from the steam outlet of the AS150 steam blower

Throw: Minimum non-wetting horizontal distance from the steam outlet of the AS150 steam blower

NOTE: Rise, Spread, and Throw distances are determined using substantially still air. The addition of cross flow air source(s) to mix ambient air with saturated blower output can significantly reduce these distances.

Steam Humidifier

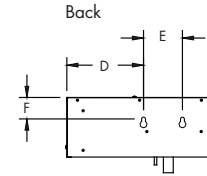
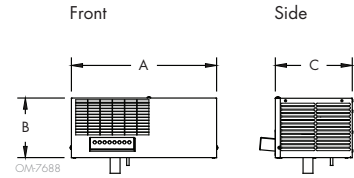


0.390" (9.9 mm) dia. holes

AS150 SERIES HUMIDIFIER DIMENSIONS BY MODEL NUMBER			
Dimension	Description	AS150	
		inches	mm
A	Cabinet width	17.7	450
B	Cabinet height	24.1	612
C	Cabinet depth	11.8	300
D	Cabinet back edge to steam/drain outlet centers	6.0	152
E	Cabinet left edge to steam/drain outlet centers	6.0	152
F	Cabinet back edge to supply water connection center	9.5	241
G	Cabinet left edge to supply water connection center	1.0	25

AS150 SERIES HUMIDIFIER MOUNTING KEYHOLE DIMENSIONS		
Dimension		
	inches	mm
A	7.1	180
B	3.6	92
C	4.4	112
D	16.3	414
E	—	—

Fan Pack



AS150 STEAM BLOWER DIMENSIONS		
Dimension	inches	mm
A	17.9	455
B	13.8	350
C	11.0	279
D	3.6	91
E	7.1	180
F	4.2	107

INCLUDED CONTROL



Vapor-logic®

Controller

The Vapor-logic controller is included with the Model AS150 and sets the standard for control capabilities in electrode humidifiers.

- Easy-to-use menus for all humidifier functions
- Web interface for Ethernet access to all functions
- Accurate, responsive RH control with PID tuning for maximum performance
- BACnet®, Modbus®, and optional LonTalk® for inter-operability with multiple building automation systems
- Automatic drain and fill events for optimized humidifier performance based on water type
- Cylinder drains after a user-specified time with no call for humidity to prevent microbial growth
- A USB port is provided for downloading controller data to a PC for viewing and analysis, data backup and restore, and firmware updates