

ES Shutter Fan

J&D Manufacturing's ES Shutter Fan is a durable agriculture grade exhaust fan perfect for barn and building peaks, greenhouses, warehouses and more. ES Shutter Fans are available without a cord, or pre-wired with a cord and plug for "No Electrician Required" installation. Fans ship fully assembled out of the box so you're up and running in no time!

Features

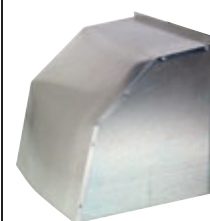
- Smooth and quiet operation
- Ships fully assembled out of the box
- Models with cord have 3-prong plug and are pre-wired for 115 Volts. No electrician required!
- Balanced 3 bladed aluminum prop with a zinc plated steel hub
- Chrome guard allows for easy cleaning and meets OSHA 1910.212(a)(5) requirements to mount at any height on inlet side of fan. (When mounted, shutter side should be 7' above ground.)
- High efficiency aluminum shutters with tie bar to reduce shutter flapping and opening on windy days
- Fully enclosed, maintenance-free, direct drive high-efficiency motors feature sealed ball bearings and a **Two Year Warranty**



No Electrician Required for Corded Models

Optional Weather Hood

Shutter Fan Size	Weather Hood
10"	VFT140855
12"	VFT140855
16"	VFT140856
20"	VFT140857
24"	VFT140858
30"	VFT140859



Weather hood for exterior shutter side of fan

Part#	Size	HP	Volts	Amps ^{NP}	HZ	Ph	Spd	RPM	@0.0" SP		@0.05" SP		@0.10" SP		@0.15" SP		Rough Opening	Test #
									CFM	CFM/Watt	CFM	CFM/Watt	CFM	CFM/Watt	CFM	CFM/Watt		
With Cord																		
VES10C	10"	1/8	115	0.9	60	1	3	1,740	630	8.7	560	7.5	480	6.4	210	2.8	12 1/2" x 12 1/2"	13143
VES12C	12"	1/10	115	1.0	60	1	1/Var^	1,732	970	11.0	880	10.0	800	8.7	190	2.1	12 1/2" x 12 1/2"	13144
VES161C	16"	1/10	115	1.0	60	1	1/Var^	1,720	1,440	15.0	1,300	12.8	1,220	11.9	1,070	10.1	16 1/2" x 16 1/2"	13145
VES201C	20"	1/10	115	1.0	60	1	1/Var^	1,709	1,680	16.6	1,380	13.6	780	7.4	520	4.6	20 1/2" x 20 1/2"	13146
VES20C	20"	1/3	115	3.8	60	1	1/Var^	1,697	3,140	11.2	2,920	10.1	2,760	9.2	2,620	8.6	20 1/2" x 20 1/2"	13147
VES24C	24"	1/2	115	4.8	60	1	1/Var^	1,677	4,640	10.9	4,310	9.8	4,080	9.0	3,860	8.4	24 1/2" x 24 1/2"	13148
VES30C	30"	1/2	115	6.2	60	1	1	837	6,770	12.2	6,320	11.3	5,840	10.3	5,280	9.3	30 1/2" x 30 1/2"	13149
Without Cord																		
VES12	12"	1/10	115/230	1.0/0.5	60	1	1/Var^	1,732	970	11.0	880	10.0	800	8.7	190	2.1	12 1/2" x 12 1/2"	13144
VES161	16"	1/10	115/230	1.0/0.5	60	1	1/Var^	1,720	1,440	15.0	1,300	12.8	1,220	11.9	1,070	10.1	16 1/2" x 16 1/2"	13145
VES201	20"	1/10	115/230	1.0/0.5	60	1	1/Var^	1,709	1,680	16.6	1,380	13.6	780	7.4	520	4.6	20 1/2" x 20 1/2"	13146
VES20	20"	1/3	115/230	3.8/1.9	60	1	1/Var^	1,697	3,140	11.2	2,920	10.1	2,760	9.2	2,620	8.6	20 1/2" x 20 1/2"	13147
VES24	24"	1/2	115/230	4.8/2.4	60	1	1/Var^	1,677	4,640	10.9	4,310	9.8	4,080	9.0	3,860	8.4	24 1/2" x 24 1/2"	13148
VES243	24"	1/2	230/460	2.6/1.3	60	3	1	850	4,640	10.9	4,310	9.8	4,080	9.0	3,860	8.4	24 1/2" x 24 1/2"	N/A
VES30	30"	1/2	115/230	6.2/3.1	60	1	1	837	6,770	12.2	6,320	11.3	5,840	10.3	5,280	9.3	30 1/2" x 30 1/2"	13149
VES303	30"	1/2	230/460	2.6/1.3	60	3	1	846	6,800	14.1	6,400	13.0	5,940	12.1	5,390	10.8	30 1/2" x 30 1/2"	13150

^{NP} Amp information as documented on motor name plate

~ These units come pre-wired for 115 Volts (electrician may rewire for 230 Volts)

^ For 50 Hz compatibility data please contact J&D Manufacturing

^ Variable speed fans require separate variable speed control to adjust fan speed.

N/A Signifies that this fan has not been tested therefore a test reference number is "not available"

Bold red text is data based on testing performed by an accredited lab using ANSI/AMCA Standard 230-12.

Due to our continual effort to provide the best products available and adhere to market conditions; literature, products, prices and availability are subject to change without notice.