

Helpful Links

Buy Bluelab Now

Hydrobuilder

Learn How To Calibrate



Bluelab pH Pen Care & Cleaning

Information sheet for Bluelab pH Pens

V01-15122013

Handy tips to care for the pH Pen

pH probes do not last forever. They age quickly through normal use. Following these care steps will help you maintain accuracy and improve the life of the pH pen:

- Hydrate the Bluelab pH Pen for 24 hours in KCl storage solution before first use.
- Always keep the pH probe tip wet. If it dries, it dies!
- Rinse the pH probe tip in clean tap water between readings for accuracy.
- Always place the storage cap back onto the pH pen after use.
- Add 3-5 drops of KCl storage solution to the round hole of the storage cap every week.
- Clean, hydrate and calibrate the pH pen every 30 days. Do this when the CAL check mark disappears. This improves accuracy and reading response speed.
- Only use plastic containers when cleaning, hydrating and calibrating.
- Touching the glass bulb with your fingers will contaminate the glass.
- Never plunge a cold probe into a hot liquid (or vice versa). Sudden temperature changes can permanently damage the pen.
- Do not immerse in oils, proteins or suspended solids that will leave a coating on the glass bulb.
- Never drop or knock the pH pen, the glass bulb will break.



The Bluelab Probe Care Kit - pH contains all the handy tools you need to clean and calibrate the Bluelab pH Pen.



Bluelab pH Probe KCl Storage Solution to store and hydrate all Bluelab pH products.



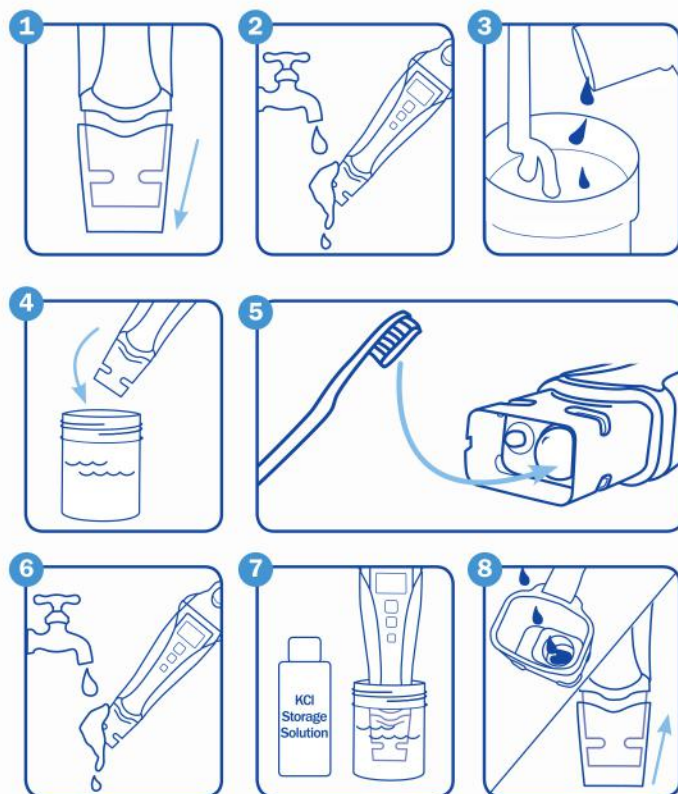
NEVER store, rinse or soak the pH pen in RO (Reverse Osmosis), Distilled or De-ionized water.

Pure water changes the chemistry in the reference, causing the probe to die.



How to clean a Bluelab pH Pen

- Remove storage cap from pH pen.** Hold the body of the pen, pull the storage cap away from body.
- Rinse pH probe tip under fresh tap water.** Never use RO (Reverse Osmosis), Distilled or De-ionized water.
- Fill a small plastic container with clean tap water.** Add a small amount of Bluelab pH Probe Cleaner or mild detergent (dishwashing liquid).
- Gently stir the probe tip in the mixture.** Ensure that you do not 'knock' the pH pen on the side of the container as this may cause damage to the probe.
- If the probe tip requires removal of heavy contamination:** Gently brush around the glassware with a few drops of Bluelab pH Probe Cleaner or mild detergent (dishwashing liquid) and a soft toothbrush.
- Rinse the probe tip well under fresh running tap water to remove all traces of the detergent mixture.**
- Hydrate.** Add Bluelab pH Probe KCl Storage Solution to a plastic cup so it covers the probe tip. Soak for 24 hours.
- Calibrate pH pen after cleaning, instructions are on the label on the back of the pen.** After calibration, add 3-5 drops of KCl Storage Solution to the round hole of the pH Pen storage cap. Place the storage cap back on to the probe.



Do you need more information?



To download product specifications, user manuals or for technical advice, visit us online at www.getbluelab.com

Visit our online video library: vimeopro.com/bluelab/videos

