

# Pylon<sup>®</sup> TR Total Release Insecticide



**Pylon<sup>®</sup>** is a name that growers trust to control mites and thrips and it is now available in a new total release aerosol

**Pylon<sup>®</sup> TR total release insecticide** provides control of mites, thrips and adult fungus gnats. **Pylon TR total release insecticide** is a miticide/insecticide that offers quick and easy application, thorough coverage, excellent plant safety and flexible re-entry times.

This unique total release formulation is also a great space mix partner with **Attain<sup>®</sup> TR micro total release insecticide** or **Pyrethrum<sup>®</sup> TR micro total release insecticide** for great knock-down and control. Also, space mixing with other BASF total release insecticides and fungicides, including **Beethoven<sup>®</sup> TR miticide/insecticide** or **Tame<sup>®</sup>/Orthene<sup>®</sup> TR insecticide**, gives growers another easy-to-use rotation option for even greater control of greenhouse pests.

## Pests Controlled

- Mites (including two-spotted spider mites)
- Thrips
- Adult Fungus Gnats

(See label for additional insects controlled.)



**Use Sites:** For use on ornamental crops and fruiting vegetables grown in commercial greenhouses.

**Pylon TR total release insecticide** may be used on bedding plants, cut flowers, flowering hanging baskets, foliage, fruiting vegetables, potted flowering plants and ornamentals.

**Formulation:** TR (Total Release Aerosol)

**Packaging:** 12 x 2 oz. cans per case

**Active Ingredient:** 4.5% Chlorfenapyr

**Mode of Action:** Interferes with energy production in cell mitochondria

**Behavior in Pests:** Translaminar and an effective contact and ingestion activity; the pest will die from an inability to generate its own energy.

**Use Rates:** One total release can treats up to 3,000 sq. ft.

**Signal Word:** WARNING

**REI:** Range:

- 10 air exchanges OR
- 2 HR REI = 2 hours of ventilation using fans or other mechanical ventilating systems OR
- 4 HR REI = 4 hours of ventilation using vents, windows or other passive ventilation OR
- 12 HR REI with no ventilation

**PPE:** Protective eyewear, long-sleeved shirt, long pants, chemical resistant gloves and shoes plus socks.

**Pylon<sup>®</sup> TR**  
total release insecticide

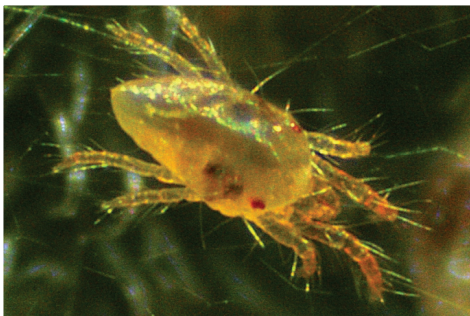
## Keys to Success

- The top of the **Pylon TR total release insecticide** can should be at or above the plant canopy before application.
- Clear out a three-foot diameter area around the can to prep for application.
- The can should be at room temperature during the application.
- Close all vents and doors to the area being treated.
- Shut down all HAF fans just before activating cans. HAF fans should remain off for a minimum of three hours or all night.
- For single-level plants, choose the low rate; for multiple-level plants, choose the high rate.

## Label Restrictions

- Do not apply more than three times during a crop growing cycle.
- Do not use on tomatoes with a diameter <1" when mature.
- Allow at least 5-7 days between each application on fruiting vegetables.
- Do not compost any discarded plant materials that have been treated with this product.
- Do not use in small, enclosed spaces such as closets, cabinets, or under counters or tables.
- Use of **Pylon TR total release insecticide** in an enclosed space may cause it to explode, resulting in injury to people or damage to property.
- Do not apply this product in a way that will contact workers; only protected handlers may be in the treated area during application.

***Two-spotted spider mite***



David Cappaert,  
Michigan State University, Bugwood.org

***Spider mite damage***



***Western flower thrips damage***

***Western flower thrips***



Read and follow label directions.

©2012 BASF Corporation. All rights reserved. APN 12-14-002-0320PYTR

**Pylon<sup>®</sup> TR**  
total release insecticide