

Pollen Tumbler

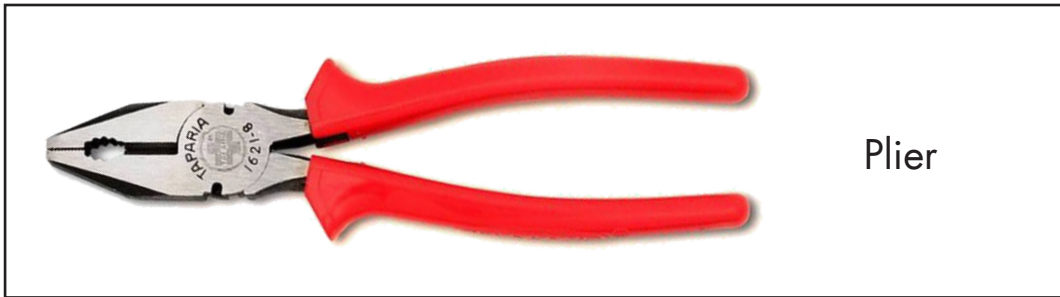
by **BUBBLE MAGIC**

Screen Replacement

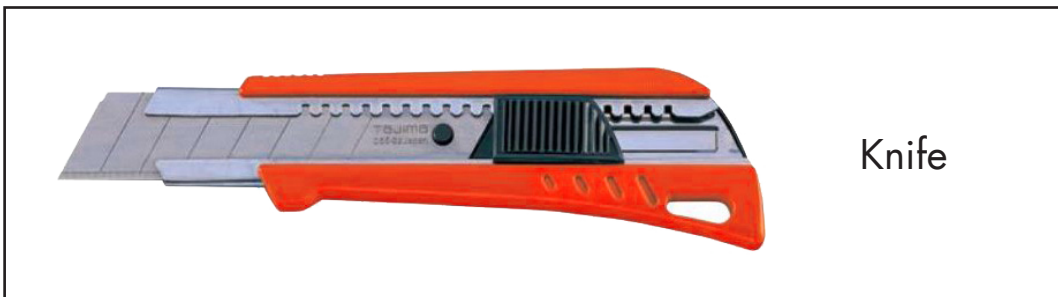


Screen Replacement Instructions

TOOLS



Plier



Knife



Staple Gun



Screwdriver

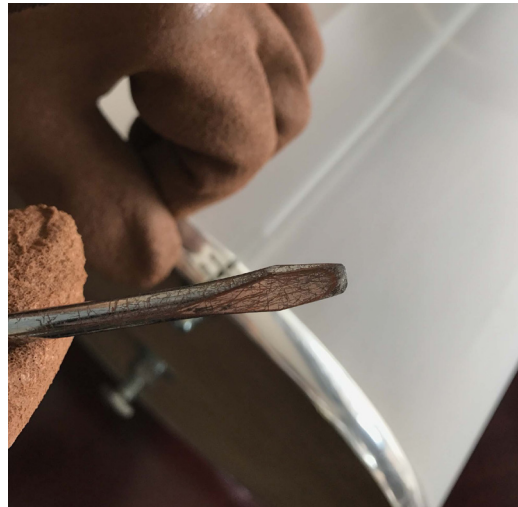
Step 1

Remove the stick-on end capping.



Step 2

Use the screwdriver to pry up the nails one by one. In order to move them more easily, you'd better prepare a screwdriver with sharp head.



Step 3

Once all nails pried up, use the plier to remove them.



Step 4

Put the new mesh screen on the drum. Make sure the seam ending inside.



Step 5

Use the staple gun to fix one end first. Adjust your staple gun to gain a perfect insert depth.



Step 6

One hand pull the screen tightly and the other hand with staple gun to fix it. In order to pull the screen tightly enough, you'd better wear your gloves.



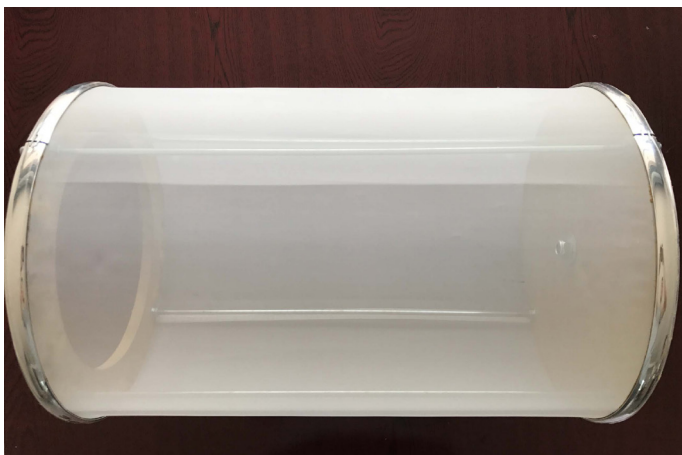
Step 7

Cut the spare part by knife carefully.



Step 8

Reinstall the stick-on end capping.



Available Sizes

190125 Replacement Screen for item 190150 - 125 micron

190145 Replacement Screen for item 190150 - 145 micron

190185 Replacement Screen for item 190150 - 185 micron

191125 Replacement Screen for item 191500 - 125 micron

191145 Replacement Screen for item 191500 - 125 micron

191185 Replacement Screen for item 191500 - 185 micron

192125 Replacement Screen for item 190500 - 125 micron

192145 Replacement Screen for item 190500 - 145 micron

192185 Replacement Screen for item 190500 - 185 micron

BUBBLE MAGIC

DISTRIBUTED BY



DL WHOLESALE INC.

WWW.DLWHOLESALE.COM / (510)550-0018

FACEBOOK / TWITTER / INSTAGRAM / YOUTUBE / SNAPCHAT @DLWHOLESALE