

INSTALLATION INSTRUCTIONS



NeoSol DS™ LED Horticulture Fixture

54-113926-00 D



NOTE:

This fixture is intended for installation in accordance with the National Electric Code and local code specifications. Failure to adhere to these codes and instructions may result in serious injury and/or damage to fixture, voiding the warranty. These instructions do not purport to cover all details or variations in equipment, nor to provide for every possible contingency related to installation, operation, maintenance, or mounting. Should specific problems occur that are not addressed by these instructions, contact your local sales representative or distributor for assistance. Retain these instructions for future reference.



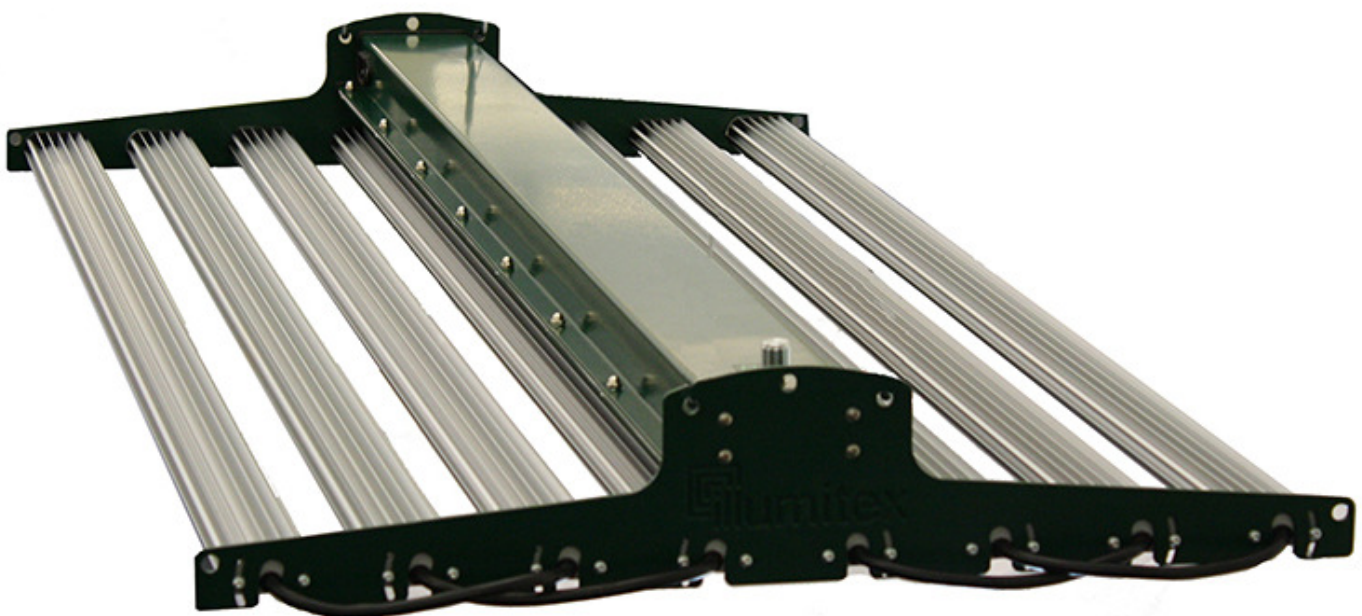
INSTRUCTIONS PERTAINING TO THE RISK OF FIRE OR INJURY TO PERSONS:

Lighted fixture may be hot. To reduce risk of injury to persons, turn off or disconnect fixture and allow to cool before handling. Luminaire must be plugged into a properly grounded 3-prong 120VAC outlet. If hard-wiring fixture to power, consult a licensed electrician. Failure to do so may result in serious injury or death. Fixture weight is approximately 37 pounds.

The **NeoSol DS™** grow light is an ideal choice for propagation of vegetative and flowering plants in grow tents, compact growing areas or large-scale commercial grow operations. Illumitex's LED technology produces high PAR values with superior light utilization and color uniformity.

Slim fixture design minimizes fixture weight while maximizing volumetric area for plant growth and allows for vertical stacking. Passive cooling eliminates the need for noisy cooling fans.

Replaces a 1000W HID fixture while using only 520W at full power. Manual or direct dimming options available.



INSTALLATION INSTRUCTIONS



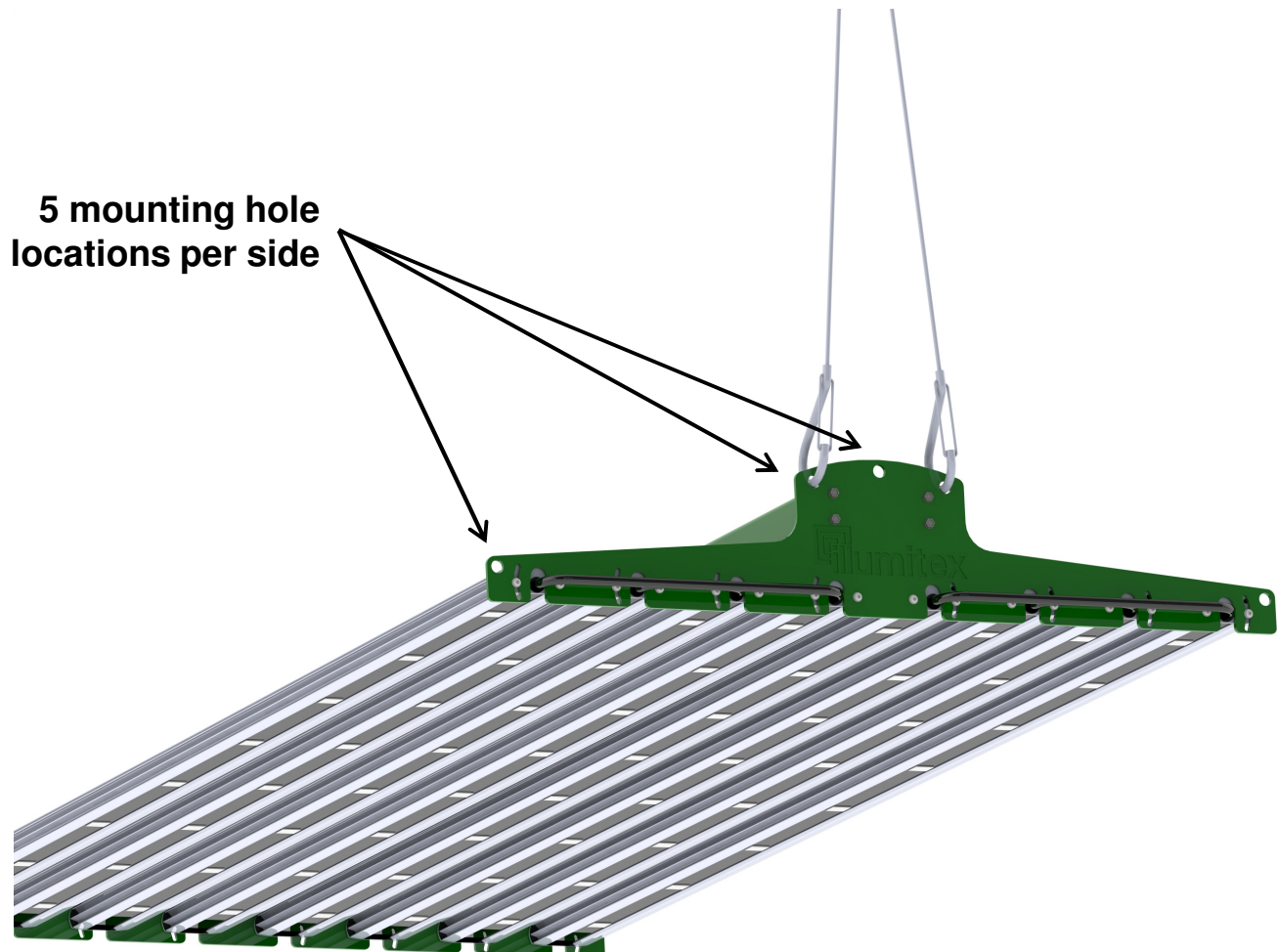
NeoSol DS™ LED Horticulture Fixture

54-113926-00 D

Fixture Installation

Installation of the **NeoSol DS™** is achieved by use of various suspension systems such as aircraft cable, chain hangers or carabineers (suspension systems not provided). Each end of the fixture features 5 hole locations for the attachment of the selected suspension system. When installing, ensure that the suspension system hooks or clips are fully inserted into the suspension holes in the fixture end caps. Attach the other end of the suspension system to the structure to be suspended from.

For fixtures with “manual dimming”, insert 3-prong plug on supplied 15-foot power cord into a properly grounded 3-prong 120VAC outlet. For fixtures with “direct dimming” see “Direct Dimming Wiring Instructions”.



INSTALLATION INSTRUCTIONS

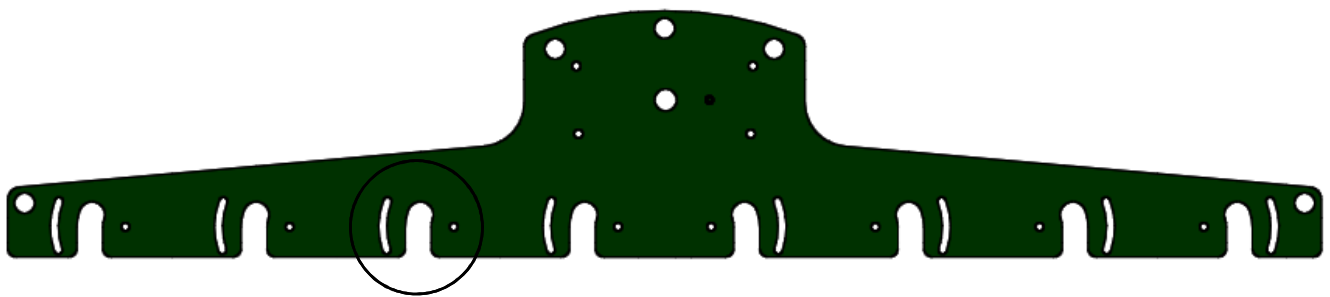


NeoSol DS™ LED Horticulture Fixture

54-113926-00 D

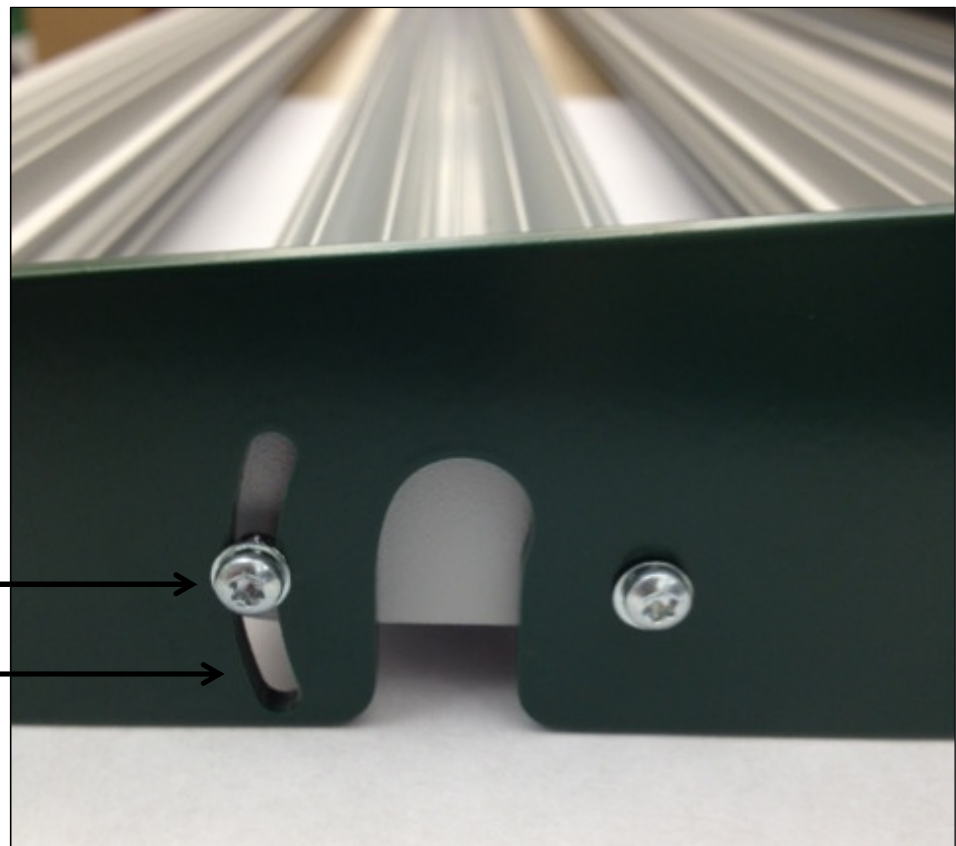
Light Bar Adjustment

The angle of each LED bar on the **NeoSol DS™** is adjustable by $+20^\circ$ or -20° from horizontal to allow for flexibility in lighting applications. Where a wider or more narrow coverage is required, slightly loosen the “locking screw” within the “curved slot” on each end of the LED bar. Tilt the LED bar to desired angle and retighten both locking screws. **Note: Torx T10 tool required.**



Locking screw

Curved slot



INSTALLATION INSTRUCTIONS



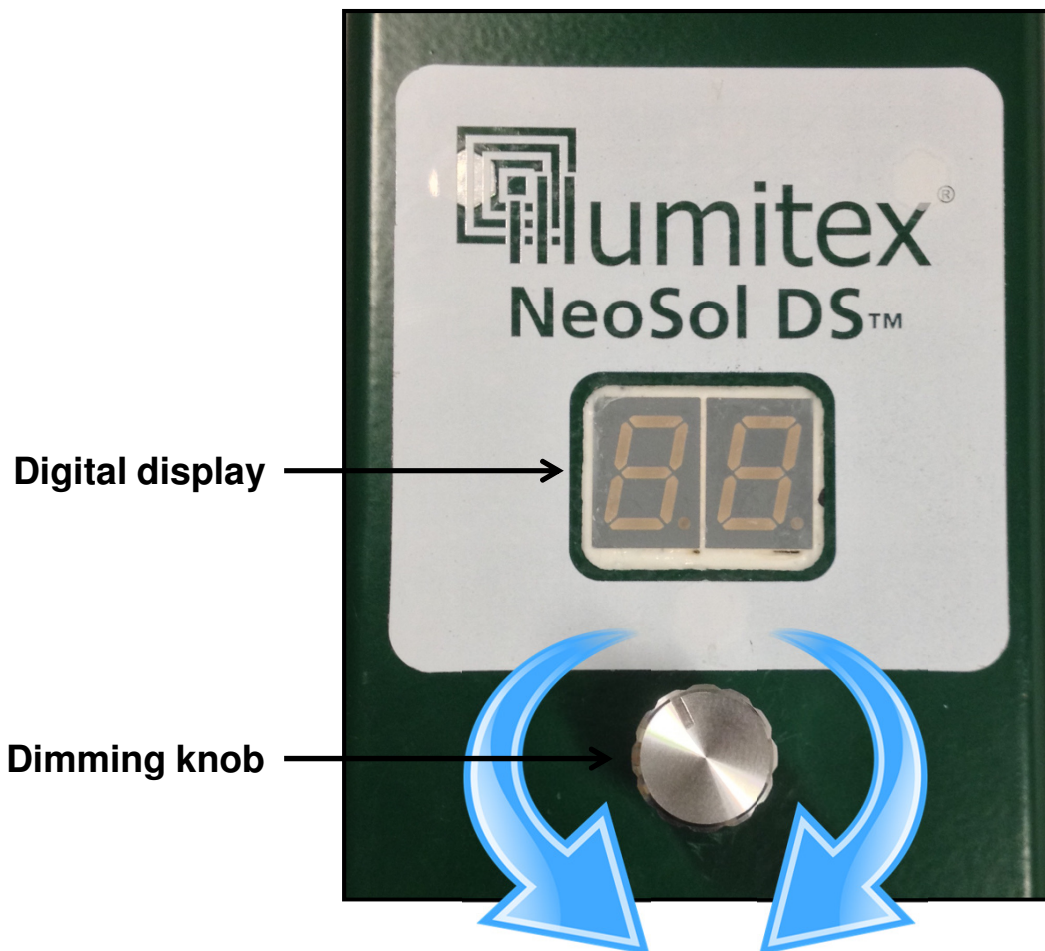
NeoSol DS™ LED Horticulture Fixture

54-113926-00 D

Manual Dimming

The NeoSol DS™ with “manual dimming” includes an integral “dimming knob” located on the top surface of the fixture near one end. The fixture is capable of dimming from 100% (520W) down to 10%.

Turn the dimming knob to the desired setting using the “digital display”. The percentage of total light output from the fixture will be shown in the display window. At 100% light output the display will read “HI” and at 10% the display will read “LO”.



INSTALLATION INSTRUCTIONS



NeoSol DS™ LED Horticulture Fixture

54-113926-00 D

Direct Dimming Wiring Instructions

(Note: Power input and all wiring connections for direct dimming installations should be completed by a licensed electrician in accordance with the National Electric Code and local code specifications.)

The NeoSol DS™ with “direct dimming” provides a means to control the light output of one or more fixtures remotely using the “0-10V dimming leads”. Each direct dimming fixture is supplied with:

- A 15-foot, 2-conductor 0-10V dimming cable from one end of the fixture.
- A 15-foot, 3-conductor power cable from the opposite end of the fixture.
- Both cables have “flying” leads for direct wiring connections (no plug or connector).

AC Power input range is 120V to 277V, auto-sensing.

AC Power Input Wiring Schematic

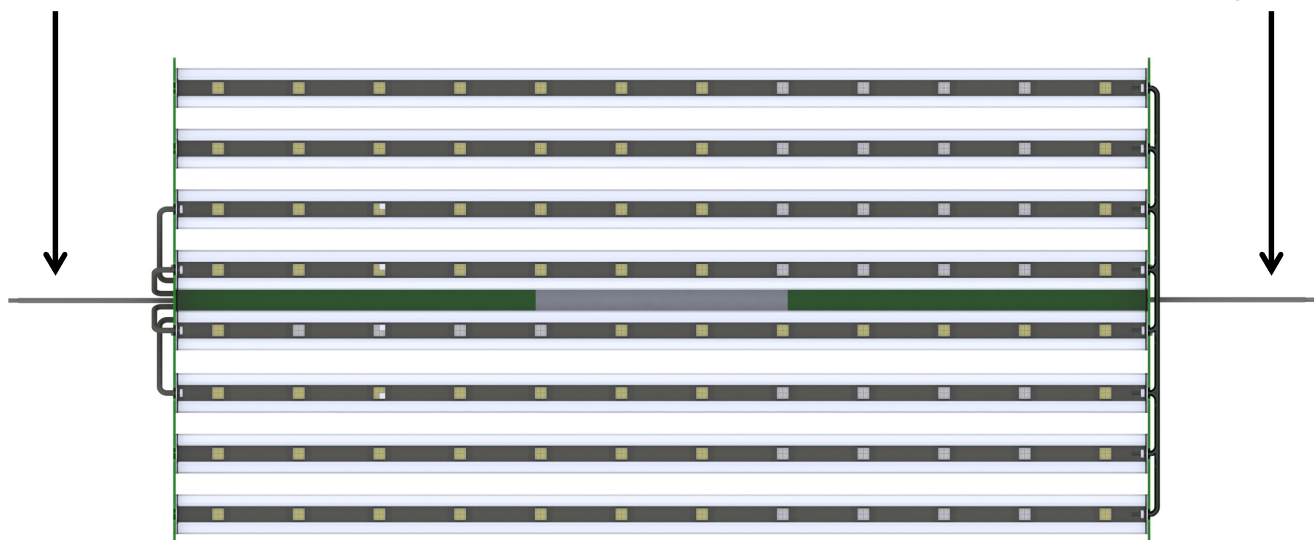
Black wire = Line
White wire = Neutral
Green wire = Ground

0-10V Dimming Input Wiring Schematic

Red, purple or white wire = (10VDC+)
Black or gray wire = (10VDC-)

**3-conductor
power cable**

**2-conductor
dimming cable**



NeoSol DS™ (bottom view)