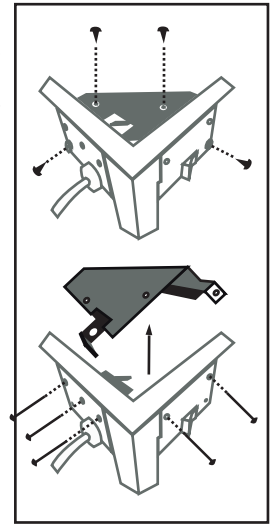




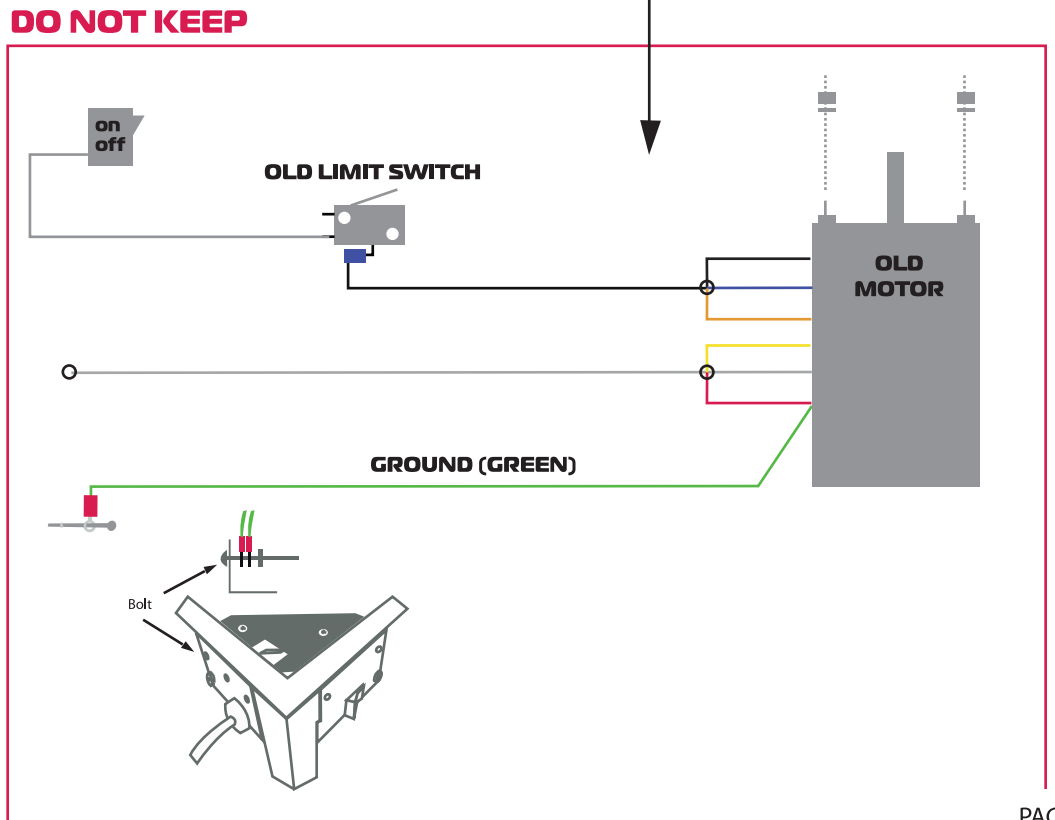
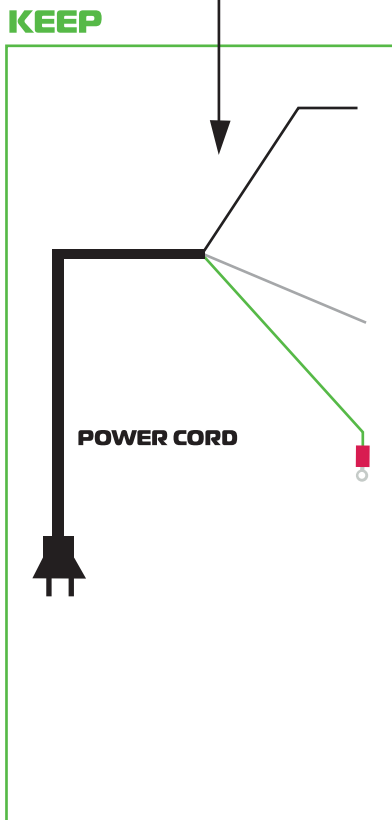
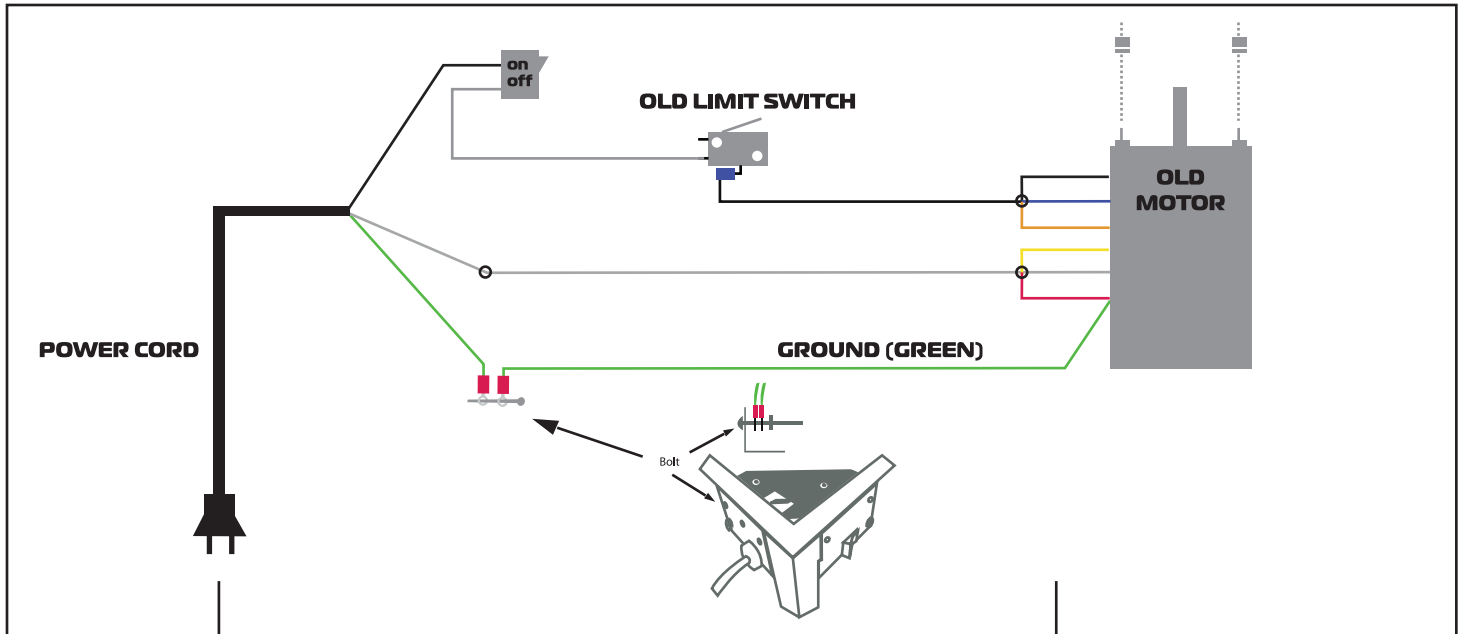
**DISCONNECTING THE OLD AUTOMATIK MOTOR.**

- 1- Unplug the old motor from the limit switch and power cord. Keep the power cord.
- 2- Open the connection box and unplug the ground that goes to the old motor. Remove the old motor.
- 3- Remove the entire connection box and the On-Off switch.
- 4- Install the new motor and drive following the diagram on Page 2.

HOW TO OPEN  
CONNECTION BOX,  
REMOVE LIMIT SWITCH  
AND ON-OFF BUTTON.

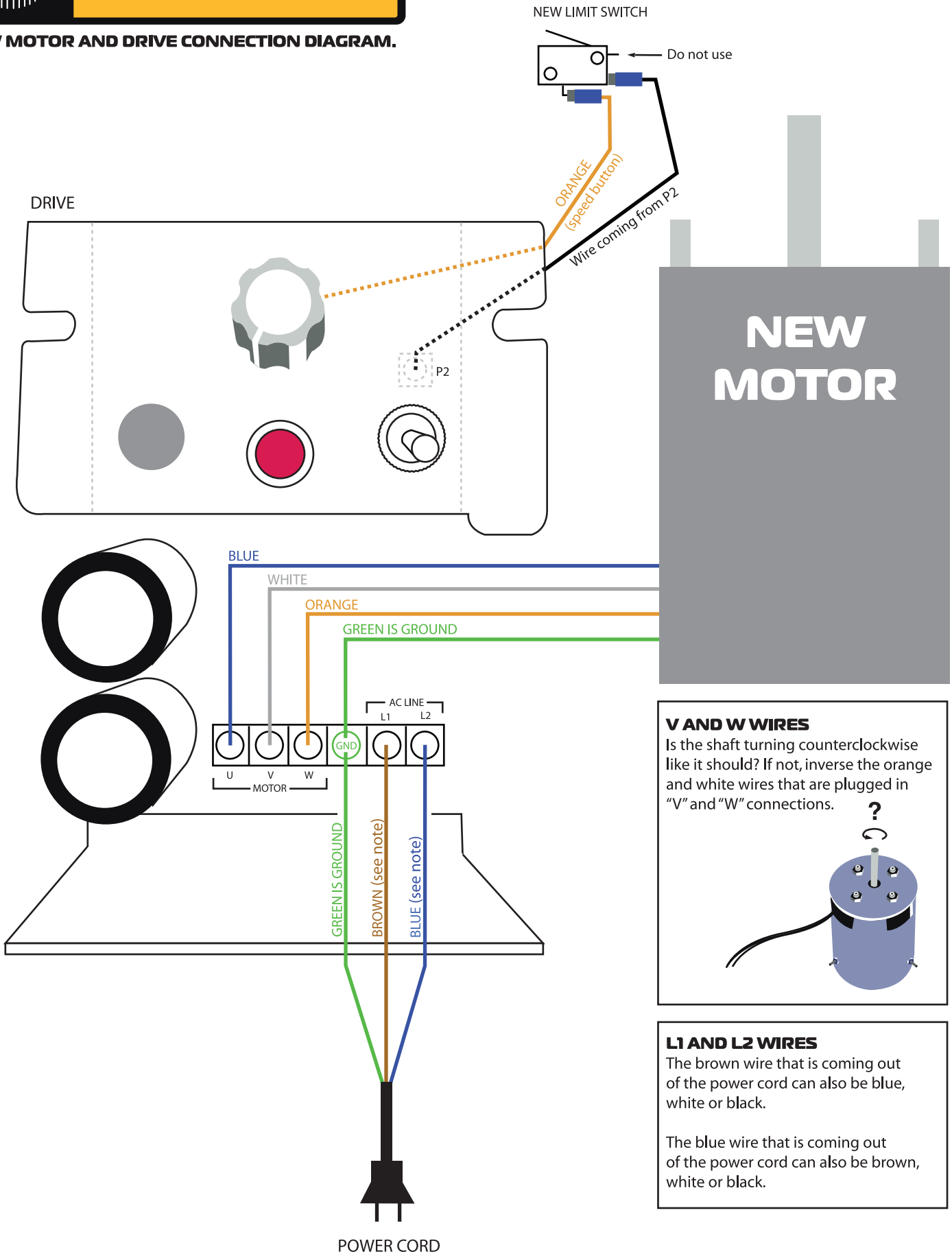


**OLD AUTOMATIK MOTOR DIAGRAM.**





**NEW MOTOR AND DRIVE CONNECTION DIAGRAM.**



**V AND W WIRES**  
 Is the shaft turning counterclockwise like it should? If not, inverse the orange and white wires that are plugged in "V" and "W" connections.

**L1 AND L2 WIRES**  
 The brown wire that is coming out of the power cord can also be blue, white or black.  
 The blue wire that is coming out of the power cord can also be brown, white or black.