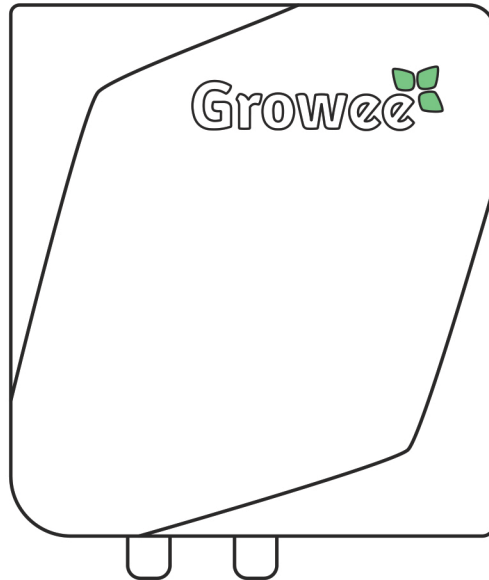
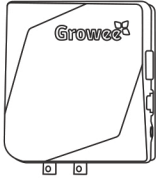


Hydro Master

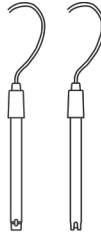
Quick Start Guide



What's In The Box



Hydro Master

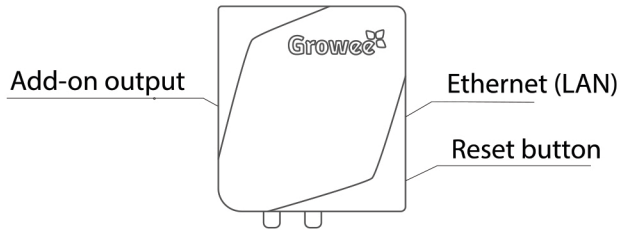
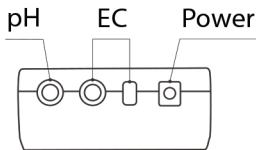


pH & EC Probes



Power Adapter

Inputs and Outputs



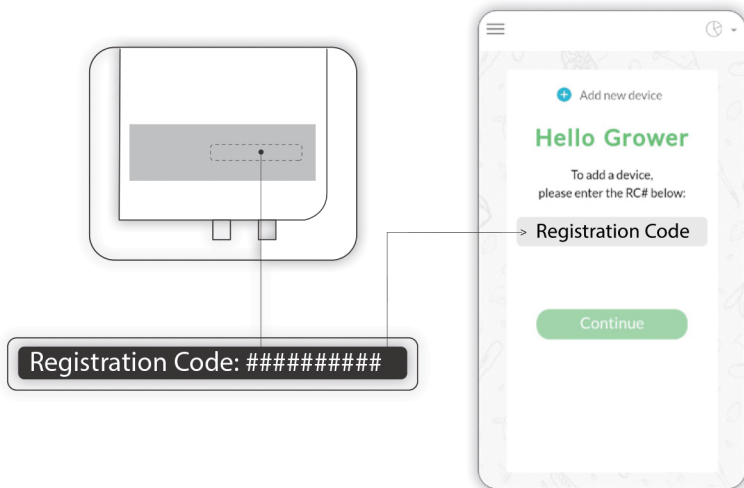
Set up your Hydro Master

Step 1: Add your new device to the app

A. Download the Growee app, create an account and log in.



B. Press “Add new device” and enter your device’s registration code, located on the **back of the Hydro Master**.



C. Complete the setup process on the app from start to finish in order to move to Step 2. Don't worry, settings can be edited after step 3 at anytime.

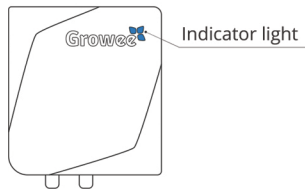
D. Close the app and move to step 2.

Step 2: Connect the Hydro Master to your WiFi network

Requirements:

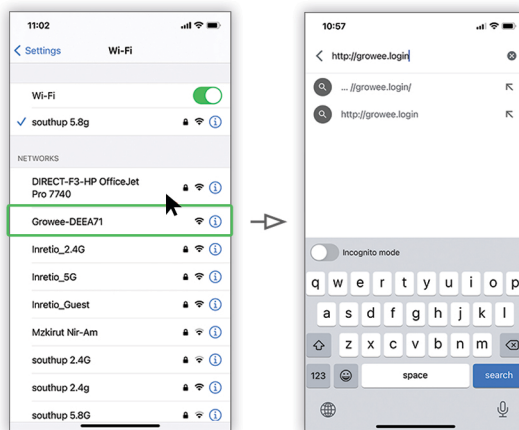
- Step 1 must be completed
- Good WiFi reception
- Your network name and password
- Your registration code, located on the back of the Hydro Master

A. Connect the Hydro Master to a power supply. The indicator light will blink until the following process is complete.



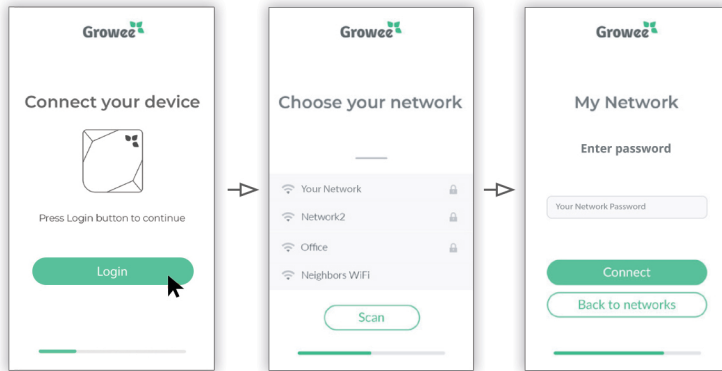
B. Using your mobile device, go to network settings and choose Growee_#####.

C. Go to your web browser and enter <http://growee.login> to open the Growee window.

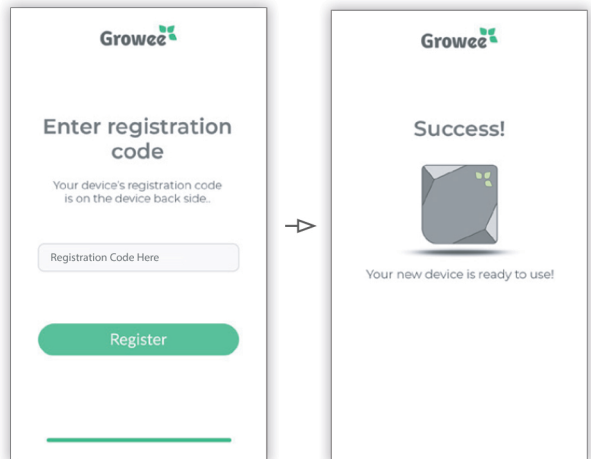
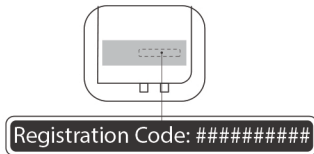


D. On the new Growee window, press “Login”.

E. Choose your WiFi network from the list and enter your WiFi network password. If the network name doesn't appear, press “Scan”.



F. Enter the Hydro Master's registration code placed on the back of the Hydro Master.

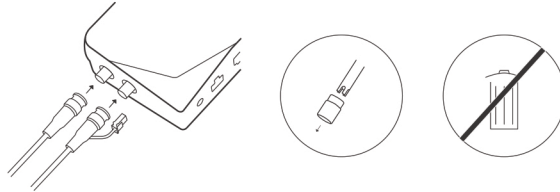


G. All done! Wait until the Hydro Master light indicator is solid green, it make take up to 1 minute

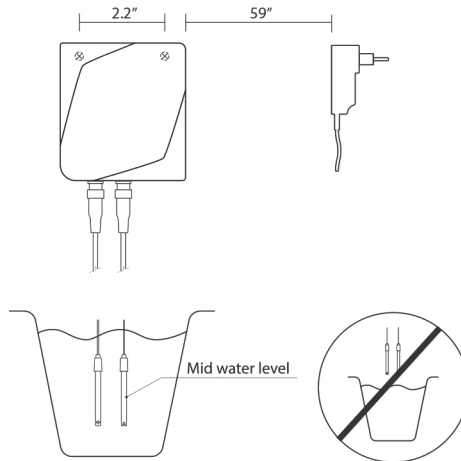
Step 3: Install your Hydro Master on the wall

Important notice: Step 2 must be completed before moving on to Step 3.

A. Attach the probes to the Hydro Master and remove the probe caps.



B. Measure and mark the distance above the reservoir that will allow the Hydro Master probes to hang at mid-water level.



Important notice: Probes should NOT hang above the water level and must be submerged at all times.

C. Installation is complete. Start growing!

Connecting the Hydro Master to a new WiFi network

Important notice: The next guide will instruct you on how to connect your Hydro Master to a new network **after** completing the installation process or using the device.

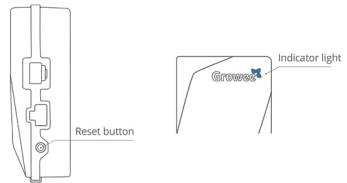
Requirements:

- A Hydro Master that has already been installed or used
- Good WiFi reception
- Your new network name and password

A. Connect the Hydro Master to a power supply.

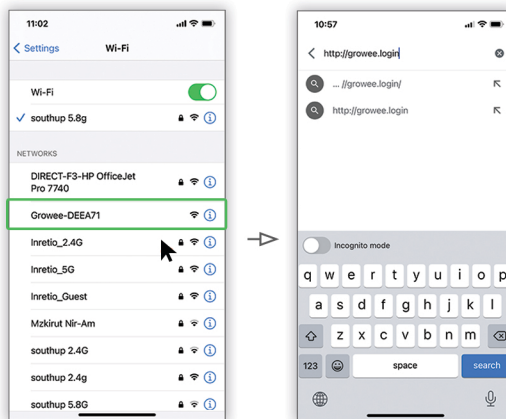
B. Press the reset button located on the right side of the Hydro Master for 3 seconds.

The indicator light will blink until the following process is complete.



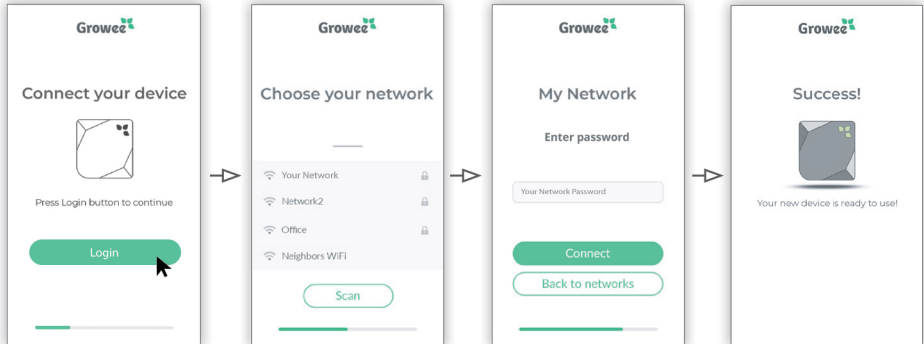
C. Using your mobile device, go to network settings and choose Growee_#####.

D. Go to your web browser and enter <http://growee.login> to open the Growee window.



E. On the new Growee window, press “Login”.

F. Choose your WiFi network from the list and enter your WiFi network password. If the network name doesn't appear, press “Scan”.



G. All done! Wait until the Hydro Master light is solid green, it make take up to 1 minute.



For support and instructional videos, visit our website:
www.GetGrowee.com

If you still need help, don't hesitate to contact us at
Contact@GetGrowee.com