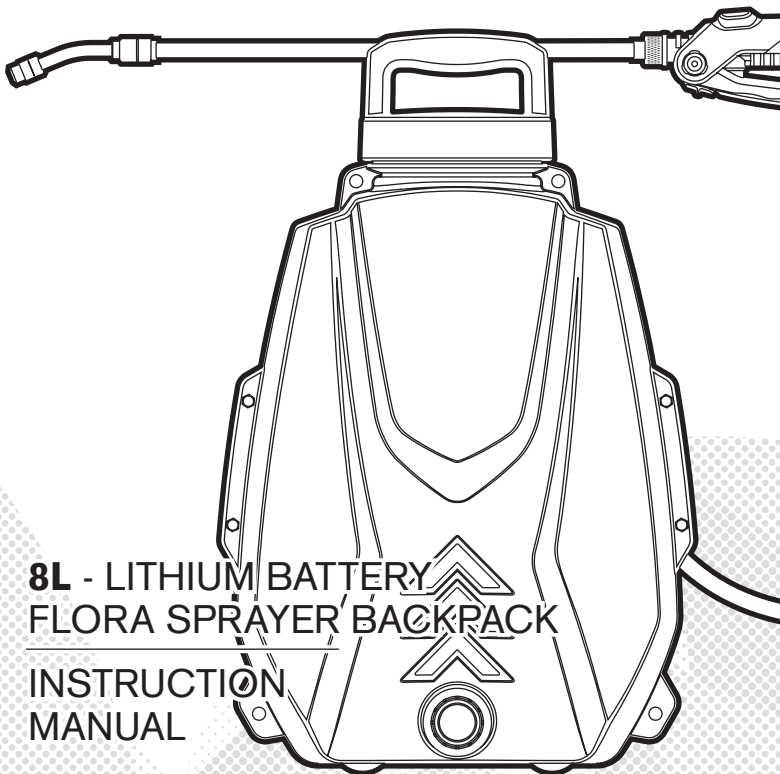




FloraFlex®

Helping you grow with your garden.®

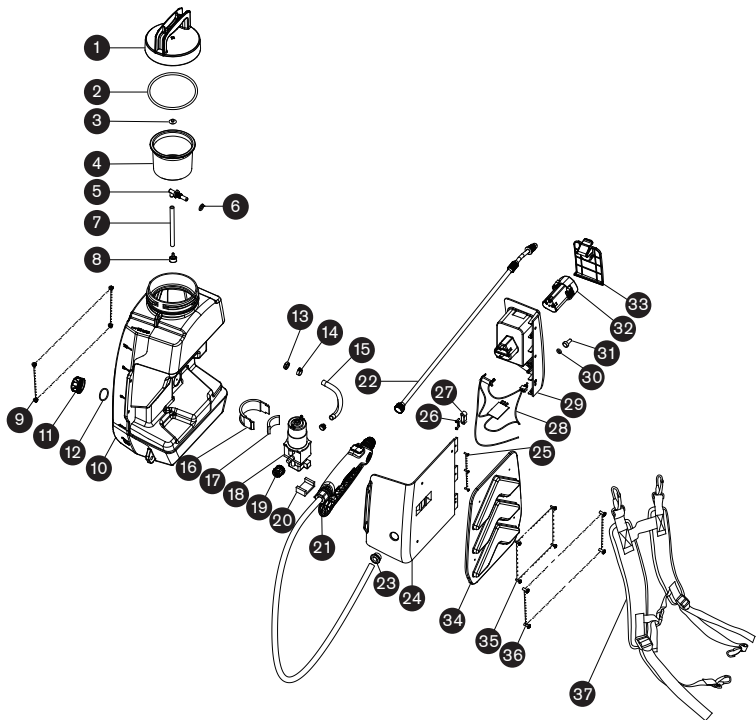


**8L - LITHIUM BATTERY
FLORA SPRAYER BACKPACK**

**INSTRUCTION
MANUAL**

WARNING: FOR YOUR PERSONAL SAFETY, READ INSTRUCTIONS BEFORE USING. SAVE THESE INSTRUCTIONS FOR FUTURE REFERENCE

SPRAYER ASSEMBLY:



PART NO.	DESCRIPTION	PART NO.	DESCRIPTION
1	CAP	14	CLAMP
2	CAP O-RING	15	WATER INLET HOSE
3	VALVE	16	WATER PUMP CLIP
4	FILTER	17	SHOCK PAD
5	CONNECTOR	18	WATER PUMP
6	CONNECTOR O-RING	19	NUT
7	PIPE TUBE	20	SHOCK PAD
8	INLET WATER FILTER	21	HOSE
9	SCREWS	22	WAND
10	TANK	23	GASKET
11	FRONT CAP	24	BACK CAP
12	FRONT CAP O-RING	25	SCREWS
13	PLASTIC NUT	26	SCREWS
		27	CLIP FOR CIRCUIT BOARD
		28	CIRCUIT BOARD COMPARTMENT
		29	BATTERY COMPARTMENT
		30	NUT
		31	SWITCH COVER
		32	LI-ION BATTERY
		33	BATTERY DOOR
		34	BACK PAD
		35	SCREW
		36	SCREW
		37	STRAP

SAFETY INSTRUCTIONS:

The FloraSprayer's lithium battery should only be charged indoors.
Never charge outdoors

When the FloraSprayer's battery requires charging, remove it from the battery compartment and connect to charging cable. When the battery's light illuminates red the battery is charging. When the light shifts to green charging is complete.

The FloraSprayer's charger is only be used with a suitable lithium battery. Any other usage is forbidden. To avoid overcharging, which will shorten service life, remove charger from outlet when charge is complete.

If you suspect your FloraSprayer's battery is damaged or not working properly do not use and contact FloraFlex or your distributor.

The FloraSprayer's battery is to only be charged with the included charger. Charging with an incorrect charger can result in a shorter service life, fire, or explosion.

After long periods of non-use the FloraSprayer's battery will gradually lose charge. For best results charge your FloraSprayer every six months. This will prevent the battery from becoming fully depleted, which will degrade the battery over time.

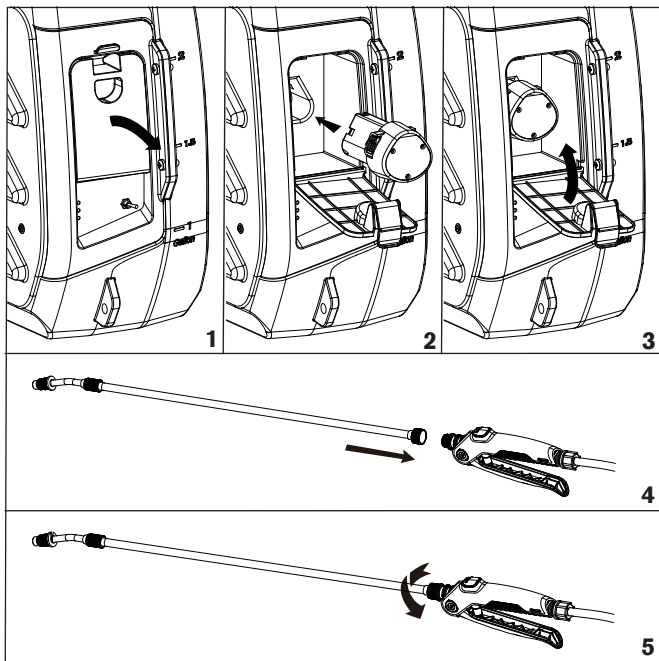
If the FloraSprayer's charger is connected to power and to the FloraSprayer charging port and the LED does not illuminate immediately unplug and discontinue use.

If the FloraSprayer's battery is completely depleted at the time of charging a longer duration to fully charge may be needed. If the LED fails to turn green after this time immediately unplug and discontinue use.

Store in a cool and dry environment at room temperature
(15 -35 C or 60-95 F) Do not exceed 65% humidity.

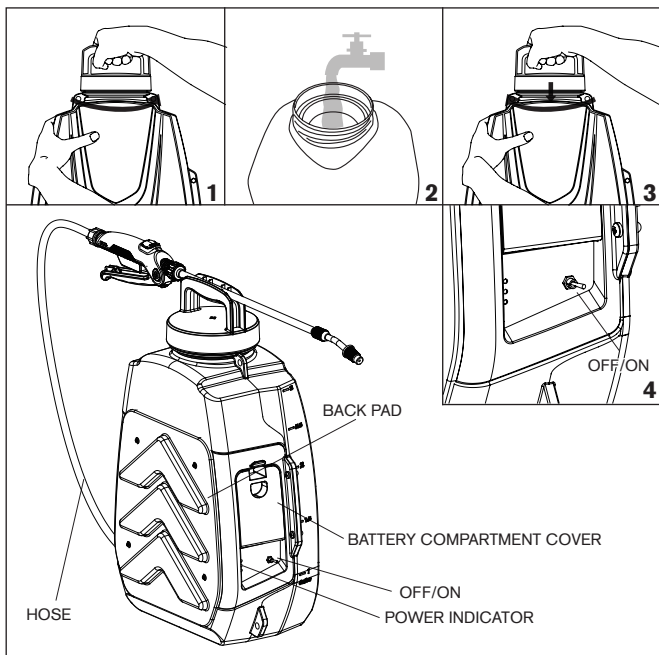
ASSEMBLY INSTRUCTIONS:

1. Open the battery compartment.
2. Put battery (No. 32 on page 2) inside the machine.
3. Close the battery compartment.
4. Join wand and trigger together.
5. Screw the wand nut to the threaded end of the FloraSprayer trigger.



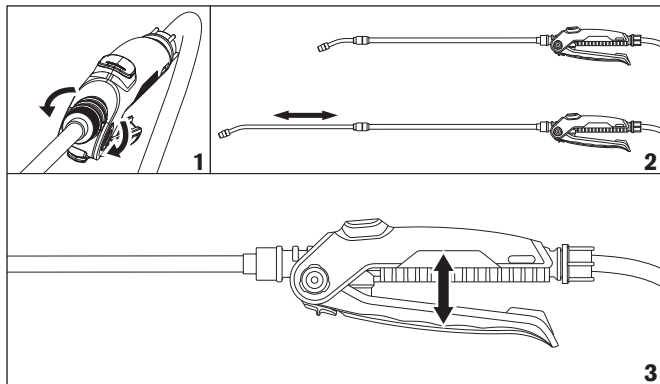
USE INSTRUCTIONS:

1. Remove sprayer cap. Twist counterclockwise to remove.
2. Fill the FloraSprayer reservoir with your desired watering liquid.
3. Replace sprayer cap and twist to seal (do not over-tighten).
4. Turn on FloraSprayer using ON/OFF switch.



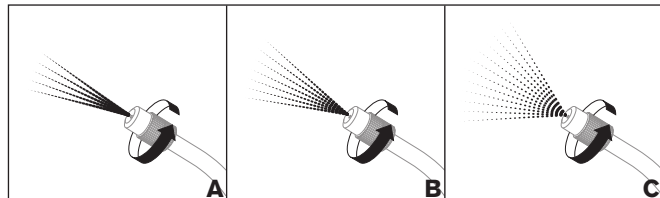
WAND INSTRUCTIONS:

1. To extend the wand twist wand locks.
2. Pull wand to desired length
3. Pull trigger to dispense spray.



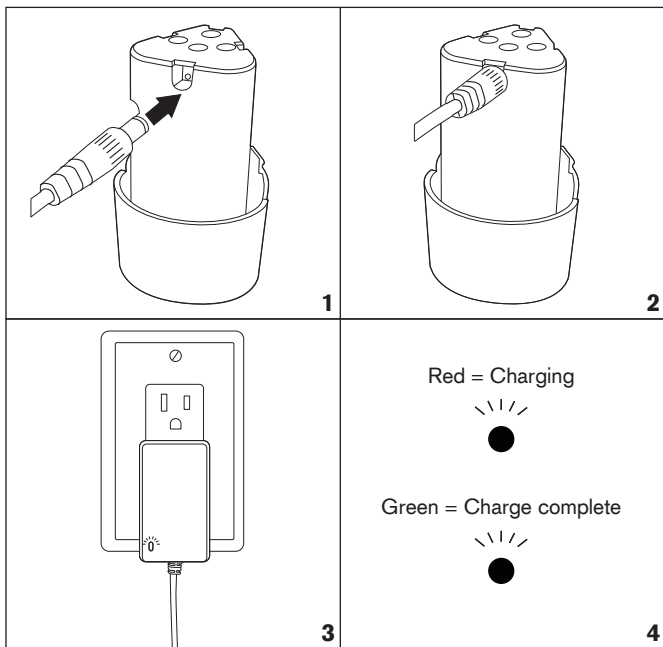
NOZZLE INSTRUCTIONS:

1. Rotate sprayer nozzle to the left or right to adjust flow. Flow can be adjusted from a A. full stream, B. medium spray, or a C. fine mist.



CHARGING INSTRUCTIONS:

1. Remove battery from battery compartment.
2. Connect batter to the charger in the correct orientation.
3. Connect charger to power source.
4. The FloraSprayer's LED will light to indicate the unit is charging. As the FloraSprayer's battery charge the LED will illuminate red. After around 150mins the LED will shift to green indicating that the unit is fully charged.



PRODUCT INFO/TECHNICAL DATA:

Item No. - **5108**

Total Capacity - **8L**

Voltage - **12V**

Current Flow - **1.3A**

Battery Capacity - **2.5 Ah - 2.6 Ah**

Work Time - **120 min**

Charging Time - **150 min**

Flow - **0.95 L/min**

TROUBLESHOOTING:

Problem	Causes	Fix
The motor fails to start after being powered on	<ol style="list-style-type: none">1. The power cable has become disconnected during charging2. The battery is out of power3. The power switch has been damaged	<ol style="list-style-type: none">1. Dismantle the cover to connect the cable2. Charge your FloraSprayer3. Replace the switch (contact FloraFlex® or your distributor)
Water is not flowing	Filter maybe clogged	Detach tank, remove filter, and clean

SAFETY INSTRUCTIONS:

CAUTION: CONTENTS UNDER PRESSURE. READ THIS BEFORE OPERATING.

1. Always wear protective clothing, gloves, eye protection, and a mask while spraying.
2. Keep FloraSprayer out of reach of children.
3. If spraying in conditions of light wind, always with direction of wind.
4. Do not spray on humans or animals.
6. Do not use if any part of the FloraSprayer is visibly damaged.
7. Do not spray any liquid above 104° F/ 40° C
8. Some chemicals that can be used with the FloraSprayer may be dangerous if swallowed or come in contact with the skin. Always refer to the chemical supplier for safety instruction and contact poison control or doctor immediately.
9. Always release pressure before refilling, servicing, or storing
10. Do not leave FloraSprayer (filled, empty, or pressurized) unattended in direct sunlight.
11. Do not use to spray solvents or flammable liquids.

WEAR PROTECTIVE CLOTHING



WEAR EYE PROTECTION



WEAR GLOVES



WEAR AN APPROVED FILTER MASK



MAINTENANCE OF EQUIPMENT:

1. Remove battery after use and recharge if depleted.
2. Clean the FloraSprayer with water without corrosives.
3. Store in a cool and dry place

WARNINGS:

1. Do not expose battery to seawater or freshwater
2. Do not store battery anywhere but a cool dry environment
3. Do not expose battery to fire or heat
4. Do not connect battery cathode to a circuit directly
6. Do not reverse the charging pattern(positive/negative) of battery
7. Do not transport or store battery with metal
8. Do not knock, throw, or stomp on battery
9. Do not store use battery where there is a strong electrostatic or strong magnetic field

