



DIG Living Wall Vertical Garden Kits



Part 2: Drip System Installation

Step 1: Select the Water Source & Correct Adapter

The Living Wall kit includes adapters to connect the drip system to a ½” sprinkler riser, outdoor faucet, or garden hose. This presentation will connect to a garden hose



½” Riser Adapter

The ¼” micro-tubing connects to either one of these adapters



Faucet/Hose Adapter

Step 2: Install “Y” Splitter on Hose Bibb (optional)



To use the faucet for a garden hose *and* the drip system, install DIG's #D52 “Y” splitter

(not included in GLW08 kit)



Step 3: Connect the Pressure Regulator & Supply Hose



The pressure regulator screws onto the splitter



The white hose supplies water to the Living Wall

Step 4: Connect Hose & Timer (Optional)

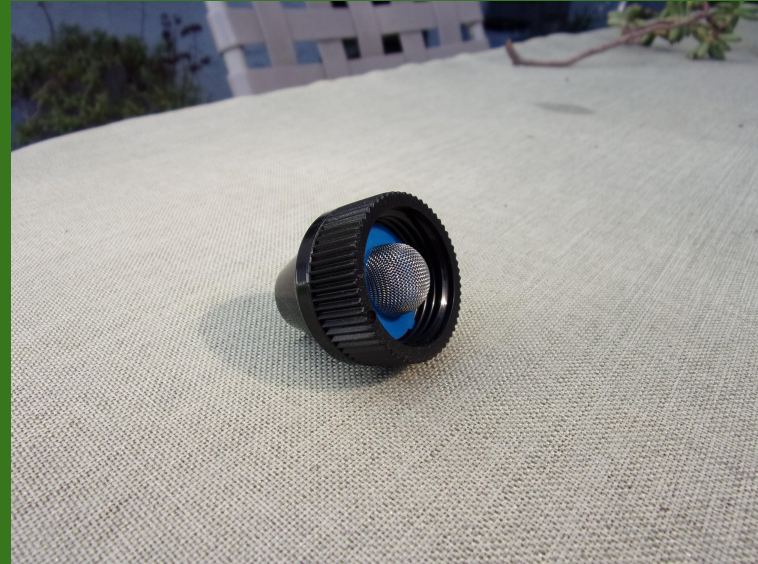


Standard manual setup



Automated with DIG EVO 100 timer

Step 5: Install Screen Washer in ¼" Adapter



Place the screen washer into the ¼" hose adapter as pictured above

Step 6: Install 1/4" Adapter & 1/4" Micro-tubing



Screw the adapter onto the hose, and then force the 1/4" micro-tubing into the smaller side of the adapter while moving the tubing from side to side

Step 6: Install 1/4" Adapter & Micro-tubing (continued)



Manual setup without timer



Automated with DIG EVO 100 Solar timer

The 1/4" adapter can also be connected directly to the pressure regulator

Step 7: Installation of 1/4" Tubing, Fittings & Drippers



Run the 1/4" micro-tubing up the wall to the first pot & then cut the micro-tubing where required and force the fittings into the ends of the tubing

Step 7: Installation of 1/4" Tubing, Fittings & Drippers



Install a 1/4" TEE at each container & connect a dripper to each TEE with a short length of 1/4" tubing

Step 8: Flush the Lines



Before installing the last dripper, open the water supply and flush out the lines

Step 9: Secure the Micro-Tubing to the Wall



Use a hammer to install the “C” clamps into the wall to hold the micro-tubing in place

Step 10: Connect the 1/8" Tubing and Stakes



Cut the 1/8" tubing to length and then force the ends over the barbs on the stake and the dripper



Step 11: Hang the Pots on the Brackets & Install the Stakes



Open the faucet and pressurize the system and check all the connections for leaks

DIG GLW08 Living Wall Kit: End of Part 2

For more information on this and other DIG products and to view part 1 of this series covering the mounting brackets & containers installation please visit-

www.digcorp.com

Thank you for watching

