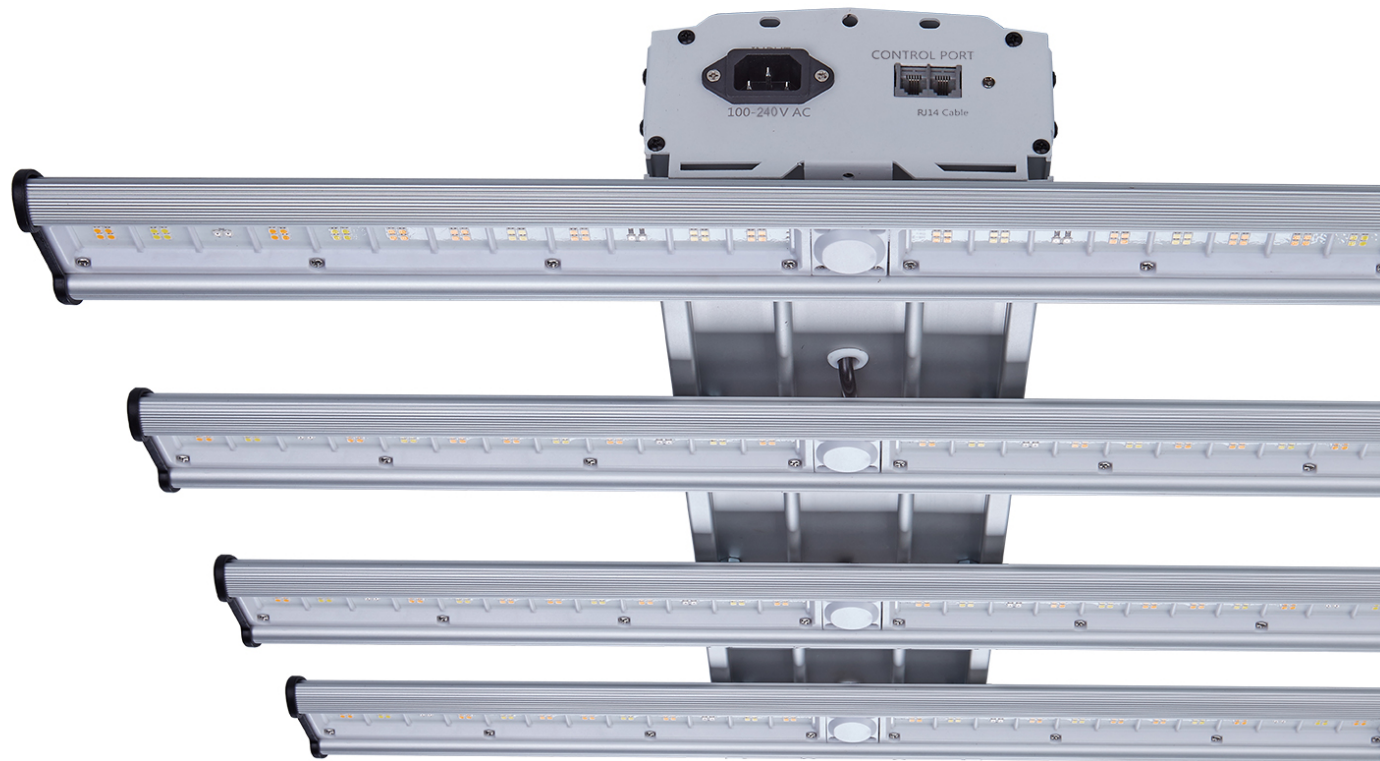


COVERT
LED-X



COVERT LED-X 250

LED USER MANUAL

Installation and Operating Instructions

PLEASE READ ALL
INSTRUCTIONS
BEFORE SETTING UP
OR USING THE
PRODUCT

INTRODUCTION:

Thank you for purchasing the Covert LED-X 250W Grow Light. Here at Hydrobuilder.com, we strive to provide cost-effective horticulture lighting solutions for all growers, no matter the budget. Our plug-and-play LED-X series grow lights are designed for premium results and ease-of-use.



TECHNICAL SPECS:

Light Source	LED
Spectrum	Full-spectrum White with Enhanced Red (Seedling to Flower)
PPF (light output)	525 $\mu\text{mol/s}$
Input Power	250 Watts
PAR Efficacy	2.1 $\mu\text{mol/j}$
Coverage Area	Veg: 5' x 5' - 4' x 4'; Flower: 4' x 4' - 3' x 3'
HPS Equivalent	400 - 450 Watts
Input Voltage	Auto-sensing 100-277 Volt
Fixture Dimensions Weight	22" L x 23" W x 5" H 16.5 lbs.
Mounting Height	$\geq 6"$ - 12" (15.2cm) Above Canopy
Thermal Management	Passive

Dimming	0-10V (with Covert Controller)
Light Distribution	120°
Color Rendering Index	90ra
Operating Temperature Range	-4°F to 185°F
Lifetime	50,000 hrs
Power Factor	>90%
Certifications	UL8800 (Damp Location Rating), CE
Warranty	3 Year Standard Warranty
Amps	2A @ 120V, 1.15A @ 208V, 1A @ 240V, 0.87A @ 277V
Power Cords Included	Includes a 120 volt power cord.
Hanging Brackets	Included

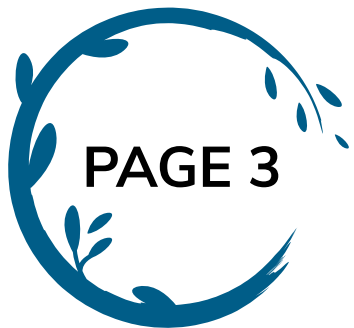
SAFETY WARNINGS:

PLEASE READ
BEFORE
USING!



The LED-X series LED grow light is passively cooled with absolutely no moving components, including fans that can often break on other LED's. Do not try to open or disassemble the fixture, it contains no service parts inside. Doing so may cause harm to the fixture and voids the warranty.

- Always adhere to the local rules and regulations when installing or using the fixture.
- Wearing protective gloves and glasses is recommended during installation.
- Always disconnect from the mains before performing any maintenance to the fixture.
- The fixture will get hot during operation. Do not touch while the light is on. Keep this product away from children.
- Always allow at least 10 minutes for the fixture to cool down before handling.
- Do not touch the LED diodes
- Keep the power cord away from hot surfaces.
- Do not plug this LED into a supply voltage other than what is included with the fixture.
- Do not use the fixture if the power cord is damaged.
- Do not use the fixture when the unit has been dropped, or its enclosure or bars are damaged.



PAGE 3

WARNING

Risk of electrical shock. To reduce the possibility of serious injury, always take the proper precautions and unplug the fixture before moving or cleaning.

CAUTION

To reduce the risk of overheating or fire, never place operating fixtures face down on a flush surface. Always allow for adequate ventilation of fixtures and power supplies

CAUTION – RISK OF PERSONAL INJURY

Disconnect power before servicing or installing luminaire. The lighted fixture may be hot. To reduce the risk of injury, turn off or disconnect power and allow to cool before handling. Fixtures must be grounded in accordance with appropriate codes. Failure to do so may result in serious injury or death. Be sure all power is off prior to installing the fixture.

WARNING

Light bars and power supply are splash-proof but not waterproof. In the event that the light bar becomes submerged, first disengage the circuit breaker, then unplug the fixture before proceeding to remove from water.

CAUTION

LED and heat sink surfaces may be hot. Allow sufficient cooling time before handling

CAUTION

To prevent eye damage, avoid looking directly at the unshielded LEDs

WHAT'S INCLUDED

- Covert LED-X 250 Watt Full-Spectrum LED Grow Light
- 120 Volt Power Cord
- 9' RJ14 Network Cable
- Mounting C-Bracket
- Specification Sheet
- User Manual



BEST PRACTICES:

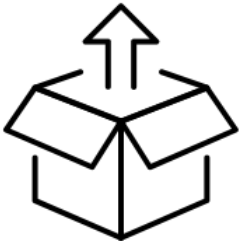
We encourage all growers to experiment with various growing techniques so you can find the process that works best for your situation. There are many different ways for growers to achieve their goals, but below are some general tips to make sure your garden is being properly managed.

- ROUTINELY check your plants' growth and health. Adjust H2O, CO2, nutrients, temperature, RH (relative humidity) accordingly. Many plants prefer higher temperatures when exposed to high PPF; experiment with higher temperature is recommended to achieve higher yields.
- ALWAYS test at the canopy level to gauge leaf surface temperature, since canopy temperature and room ambient the temperature might vary. If your hand get too hot when at plant canopy level, then the light is most likely too close the plants and should be raised up.

INSTALLATION:



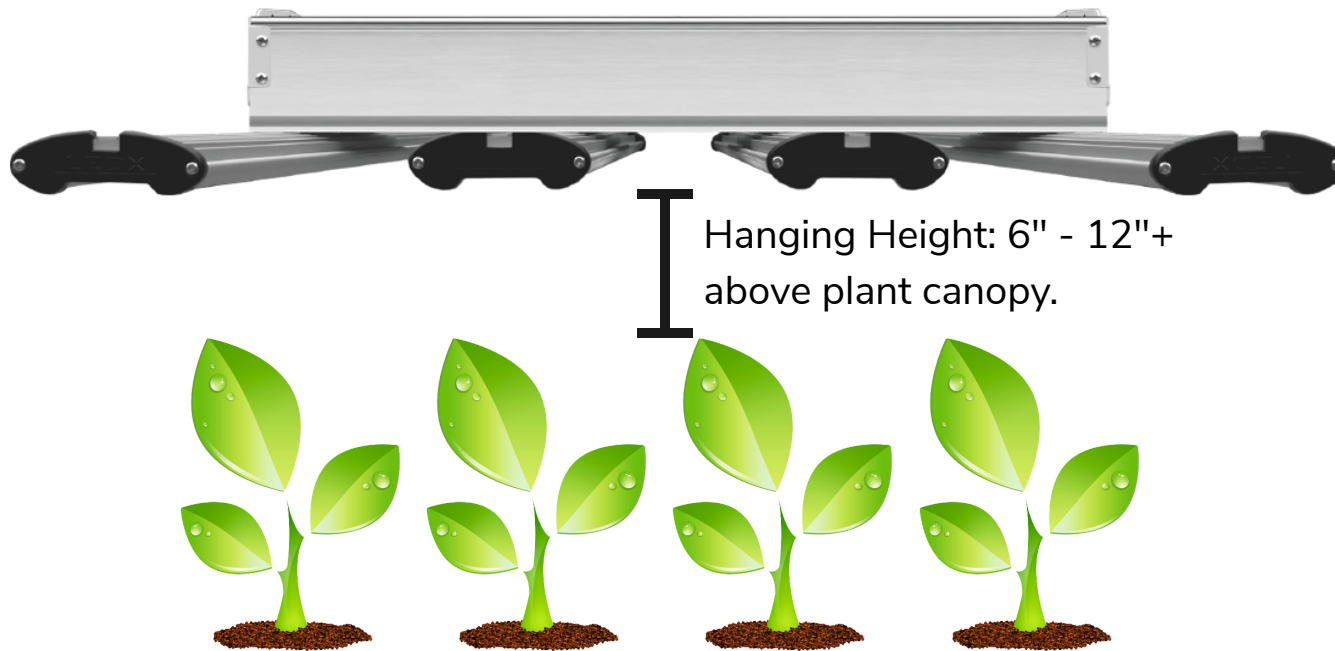
- Switch off main power
- We always recommend using certified or qualified installation professional to ensure optimal performance and safety



- Unbox fixture and place on a flat, stable surface.
- Attach light hangers and hang directly over the grow area. Make sure the LED is level over your plants for the best coverage.
- Plug in LED and turn on. If using the master controller, please use controller instructions for proper setup.

MOUNTING THE LED

The Covert LED-X now includes hanging brackets that connect to the top of the LED ballast to hang the light. **NOTE:** V-Hooks are no longer included to hang the light. Instead, we have drilled a new hole on each end of the light to connect the carabiner clips of light hangers for the light to be hung evenly over the plant canopy.



WARRANTY:

Hydrobuilder warrants the mechanical and electronic components of their product to be free of defects in material and workmanship if used under normal operating conditions for a period of three (3) years from the original date of purchase. If the product shows any defects within this period and that defect is not due to user error or improper use, Hydrobuilder will, at its discretion, will replace the fixture. The Hydrobuilder warranty liability extends only to the replacement cost of the product. In case Hydrobuilder decides to replace the entire product, the limited warranty shall apply to the replacement product for the remaining initial warranty period.



DISCLAIMER:

Hydrobuilder.com will not be held responsible for any damage caused by the operation of the unit, be it incidental or consequential or any type including, without limitation, damage or injury caused to other products or machinery or buildings. Nor will responsibility be accepted for loss of time or profit, loss of finished product, or for any inconvenience caused in any way.

COVERT

LED-X

TEL: 888-815-9763

EMAIL: SUPPORT@HYDROBUILDER.COM

WEBSITE: WWW.HYDROBUILDER.COM

ADDRESS: 312 OTTERSON RD STE D, CHICO, CA, 95928



THANK YOU FOR CHOOSING COVERT LED!

Exclusively distributed by:

Hydrobuilder[®]

Hydrobuilder.com