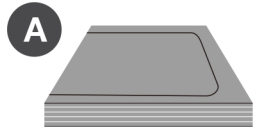




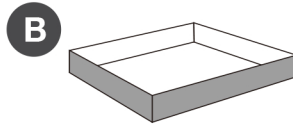
Grow Tent Assembly Instructions

Note: Having a friend assist you with the assembly can be very helpful

Parts List:



Grow Tent Canvas



Tent Spill Tray

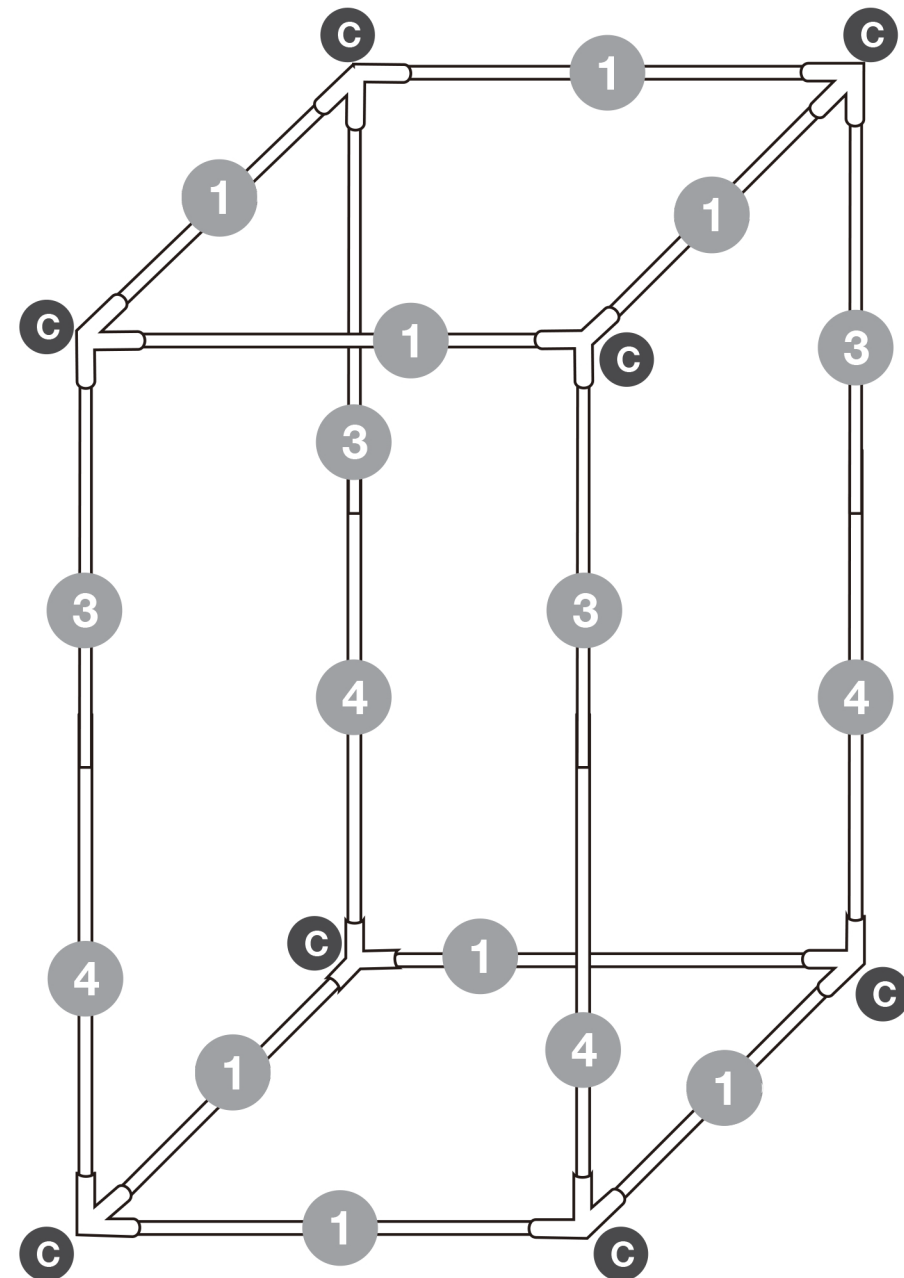


Corner Adapters

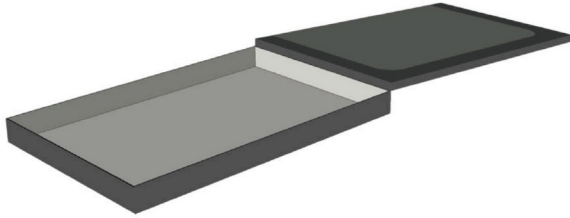
1		8 pcs
3		4 pcs
4		4 pcs
5		2 pcs
6		2 pcs

1

Connect the grow tent framework ensuring the poles are seated properly in the corner connectors. It may be necessary to gently twist the poles back and forth to make a secure connection.



- 2** Lay out the grow tent outer canvas, making sure that all zippers are completely undone.

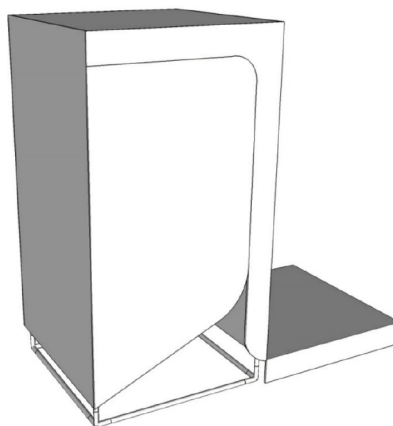
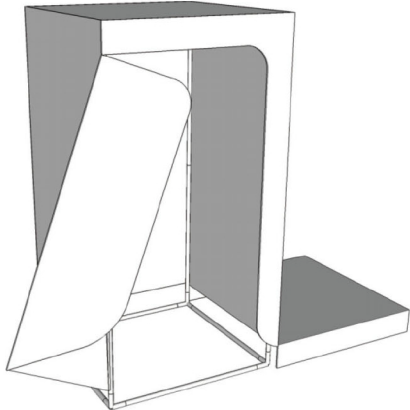


- 3** Pull the grow tent over the constructed framework ensuring that the floor is left to one side as shown in left image below.

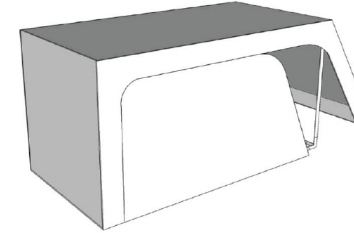
- 4** Zip up the front of the tent half way as shown in the right image below.

Step 3

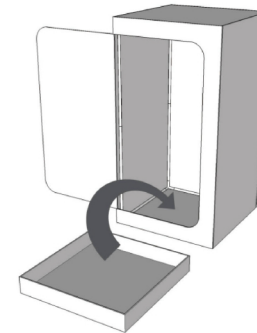
Step 4



- 5** Lie the grow tent on its side and slide the floor of the canvas over the bottom of the framework. Close all zippers fully and stand the grow tent back up.



- 6** Unzip the front door and place the floor tray into the bottom of the tent. Locate the velcro tabs around the outside top edge of the tray and fasten them to the tent.



- 7** Fit the ceiling hanging bars inside the tent as shown.

