



Ensuring that the AQUAvalve floods and drains correctly

- 1** Making sure your AQUAvalve floods and drains correctly is simply achieved and only takes a few seconds.
- 2** Hold the AQUAvalve at eye level so that you can see the silicon fitted to the top float resting on the hole below it.
- 3** The silicon must create a tight seal when touching the hole.
- 4** If it looks like it is not sitting parallel on the hole below, simply lift the top float and apply pressure to one side of the silicon, drop the float and hold at eye level again. Repeat the procedure if necessary.

Care and maintenance

- 1** At the end of your growing season, clean the AQUAvalve using warm soapy water. Using an old tooth brush will help.

The AQUAvalve is easily disassembled. The top float will slide all the way across and the bottom float is unclipped from its pivoting position. The circular discs fitted to the top float can also be removed by using pliers to grip the raised point.

At this point it is advisable to remove the silicones to avoid them being lost.
- 2** It is also handy to have a paper clip or pipe cleaner to hand so that you can push it through the AQUAvalve nozzle, this will remove any lime scale build up that may have occurred during the growing season.

Blowing through the AQUAvalve nozzle will also help to remove any build up. Do not under any circumstances use a drill & drill bit to clear the AQUAvalve nozzle.

This will potentially damage the AQUAvalve beyond repair.

Your easy2grow 6 set-up guidelines



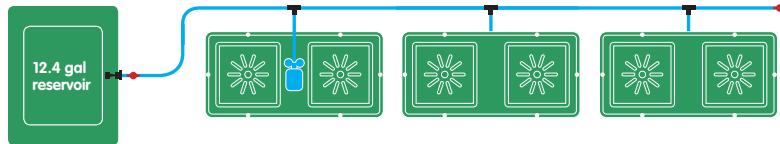
easy2grow 6 contents

- 1x 12.4 gal reservoir and lid
- 3x 2Pot tray & lid
- 6x 2.2 gal pot
- 3x AQUAvalve
- 1x 1/4" top hat grommet
- 1x 1/4" golf filter
- 2x 1/4" in-line tap
- 3x 1/4" tee connector
- 13ft of 1/4" pipe
- 6x Root Control Sheet
- 6x PotSock Square

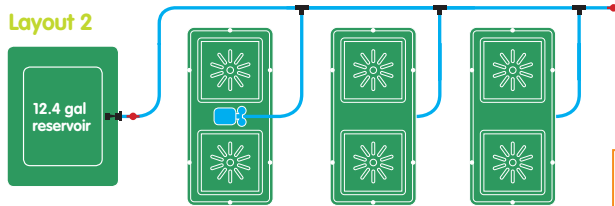
Plan views and options

Suggested layout

Layout 1



Layout 2



AQUAvalve



1/4" golf filter



1/4" top hat grommet



1/4" tee connector



1/4" pipe



1/4" inline tap

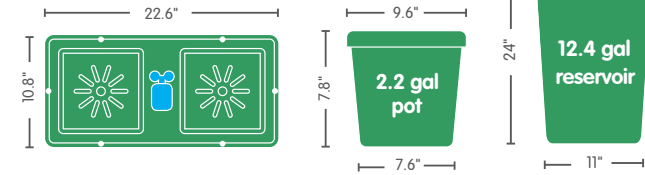


Connect your 1/4" pipe to the relevant fitting

Advice

- Pot up your plants, water through, then allow your plants to establish in the pots for a period of 7 to 10 days before turning your system on. This will encourage a stronger and healthier root system.
- Always raise your reservoir to a minimum of 6" above the highest AQUAvalve and re-fill the reservoir when there is approximately a 1/3 of the solution left - NEVER ALLOW THE RESERVOIR TO RUN EMPTY.
- For best results, we recommend mineral fertilisers. Do not use organic fertilisers, as they have a tendency to block small pipe work.
- Clean all substrate from the bottom and sides of the pots before placing in each tray. This will ensure your system is clean from the start.
- Always use free draining substrates, for example: soil/perlite, coco/perlite, soil/clay pebbles, coco/clay pebbles, rockwool/clay pebbles.

easy2grow dimensions



easy2grow 6 setup instructions

1



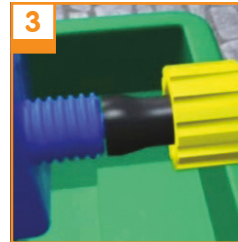
Put Root Control Sheets into pots gold face down.

2



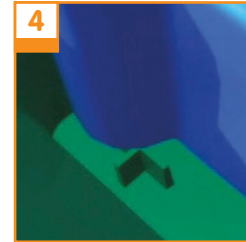
Fill pots with medium and pot up plants.
Water through pots and allow to drain outside the tray.

3



Remove collar.
Push 1/4" pipe through collar and attach to AQUAvalve nozzle.
Rescrew collar - **DON'T overturn...** when you feel it grip **STOP**.

4



Connect AQUAvalve so 'half moon' is on T section in the tray.
Position tray so it is level

5



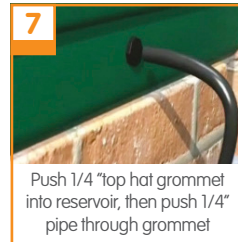
Fit PotSock Squares over the bases of the pots

6



Cut 1/4" / 1/2" pipe to appropriate length.

7



Push 1/4" top hat grommet into reservoir, then push 1/4" pipe through grommet

8



Inside the reservoir push 1/4" filter into 1/4" pipe

9



Place both pots in tray, make sure they are **CLEAN!**
Place lid over valve onto tray.

Using your front instruction sheet, repeat the module set up instructions for the number of trays.

Allow your plants to establish for 7-10 days before turning system on

Advice

If you require any guidance email - info@autopot-usa.com