

AC INFINITY

CLOUDLINE SERIES

MIXED FLOW INLINE FAN SYSTEMS

USER MANUAL

WELCOME

Thank you for choosing AC Infinity. We are committed to product quality and friendly customer service. If you have any questions or suggestions, please don't hesitate to [contact](#) us. Visit www.acinfinity.com and click contact for our contact information.

EMAIL

support@acinfinity.com

WEB

www.acinfinity.com

LOCATION

Los Angeles, CA

MANUAL CODE CLAB2303X1

PRODUCT

CLOUDLINE A4
CLOUDLINE A6
CLOUDLINE A8

MODEL

AI-CLA4
AI-CLA6
AI-CLA8

UPC-A

819137021747
819137021754
819137021761

MANUAL INDEX

Manual Index	Page 5
Product Warning	Page 6
Interference from MH and HPS Lights	Page 7
Key Features	Page 8
Product Contents	Page 9
Installation: Mounting	Page 11
Installation: Hanging	Page 16
Installation: Motor Cap Orientation	Page 20
Installation: Configuration Setup	Page 21
Powering and Setup	Page 22
Controller Mounting	Page 23
UIS™ Platform	Page 25
UIS™ Compatibility	Page 26
Adding More Fans	Page 27
Adding More Devices	Page 28
Cleaning	Page 30
Programming	Page 32
FAQ	Page 33
Other AC Infinity Products	Page 35
Warranty	Page 36

PRODUCT WARNING



TO REDUCE THE RISK OF FIRE, ELECTRIC SHOCK, OR INJURY TO PERSONS,
OBSERVE THE FOLLOWING:

1. Ensure your power source conforms to the electrical requirements of this product.
2. Check your local code restrictions for additional safety measures that may be needed for a proper code compliant installation.
3. Read all instructions before installing and using this product.
4. If you are unfamiliar or have doubts about performing this product's installation, seek the services of a qualified, trained, and licensed professional. Inappropriate installation will void this product's warranty.
5. This product must not be used in potentially hazardous locations such as flammable, explosive, chemical-laden or wet atmospheres.
6. Ducted products must always be vented to outdoor areas.
7. Do not cover power cords with rugs or other fabric materials.
8. This product has rotating parts. Safety precautions should be exercised during the installation, operation, and maintenance of this product.
9. Do not insert or allow fingers or foreign objects to enter any ventilation or exhaust openings as it may cause electric shock, fire, or damage to this product. Do not block or tamper with this product in any manner while it is in operation.
10. Do not depend on the on/off programming as the sole means of shutting power from this product. Unplug the power cord before installing, servicing, or moving this product.
11. Do not operate this product while its cord is damaged, or if it malfunctions, has been dropped, or is damaged in any manner.

INTERFERENCE from MH and HPS LIGHTS

Certain grow light models with HID* ballasts that do not use electromagnetic shielding will create an area of radio frequency interference (RFI). This can distort nearby frequency-sensitive components like internet lines and climate sensors. RFI can be emitted from the ballast's cords or the ballast itself.

Follow these steps to ensure proper functionality and to prevent radio frequency interference from affecting your sensor probe:

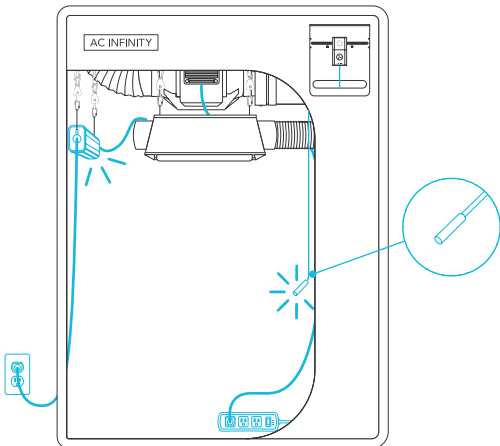
TIP 1

Keep the probe cord far away from your ballast's cords to ensure the controller properly detects climate conditions.

You may also wrap the probe cord and create a cone around the sensor head with aluminum foil tape.

TIP 2

Do NOT plug your grow light and inline fan into the same duplex outlet. Plug your grow light and inline fan into separate power strips and electrical sockets.

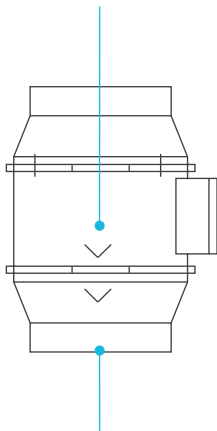


*MH, HPS, CMH, or CHPS

KEY FEATURES

QUIET PWM MOTOR

PWM-controlled motor features precise speed control, reduced rotor noise, and energy-efficient EC voltage.

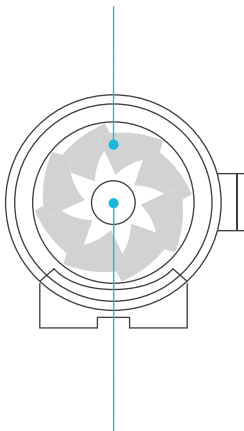


IP44 PROTECTION

The inline duct fan is sealed to Ingress Protection 44 standards, rated with high resistance to liquids and dust.

STATOR BLADE FANS

Hydro-mechanical stator blades enable efficient airflow delivery in high static pressure environments.

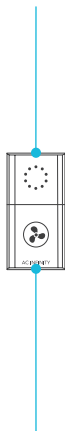


DUAL BALL BEARINGS

The motor contains ball bearings with an estimated 67,000 hour lifespan. Enables the fan to be mounted in any direction.

SPEED CONTROLLER

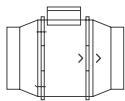
Single button controller with circular dot display that enables fan speed control in ten speeds.



BACKUP MEMORY

Smart programming ensures that speed levels will be retained even when the fan is powered down.

PRODUCT CONTENTS



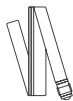
DUCT FAN
SYSTEM
(x1)



SPEED
CONTROLLER
(x1)



UIS F - 4PIN M
ADAPTER
(x1)



HANGING
STRAPS
(x2)



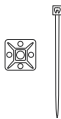
UIS M-M
CORD, 10 FT.
(x1)



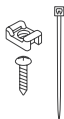
WOOD SCREWS
(WALL MOUNT)
(x1)



HOOK AND
LOOP TIES
(x4)



ADHESIVE
WIRE MOUNT
(x1)



WIRE
MOUNT
(x6)



WALL
ANCHOR
(x4)

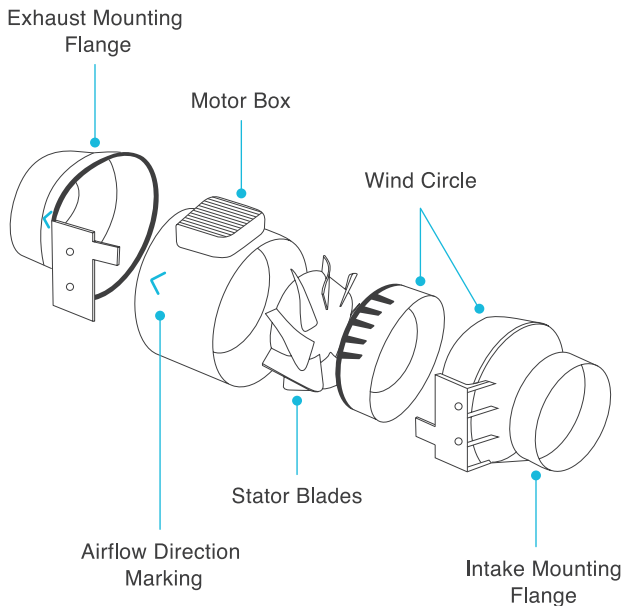


DUCT FAN
SCREW SET
(x4)



CONTROLLER
PLATE BOLTS
(x2)

PRODUCT CONTENTS

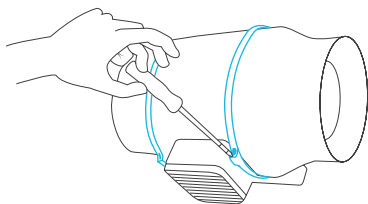


INSTALLATION

MOUNTING

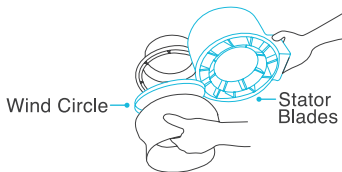
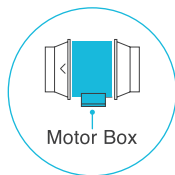
STEP 1

Unscrew the bolts on both sides from the plastic rings using a Phillips screwdriver.



STEP 2

Remove the motor box from the flange bracket. Remove the wind circle between the motor box and the intake flange.

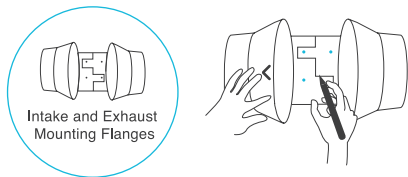


INSTALLATION

MOUNTING

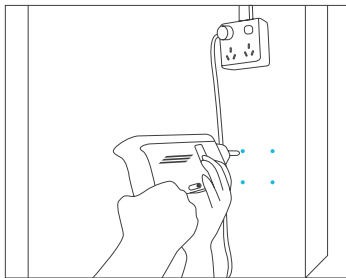
STEP 3

Use the flange bracket to set your desired fan position. Mark the four mounting holes.



STEP 4

Drill four holes into the marked locations. Make sure your mounting area is structurally sound and free from obstruction.

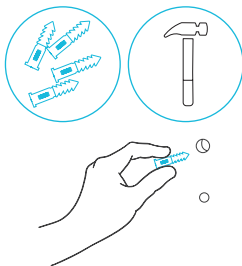


INSTALLATION

MOUNTING

STEP 5

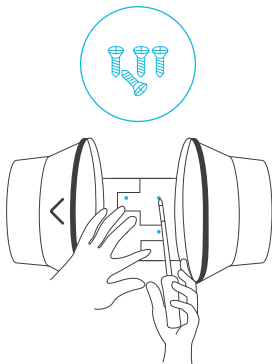
If you are mounting onto anything other than a wood support or stud, insert the included four wall anchors into the drilled mounting holes. You may need to use a hammer to secure them through the holes.



STEP 6

Align the flange bracket's holes with the wall anchors. Screw in four wood screws with a screwdriver or drill to secure the flange bracket.

Make sure its airflow arrow is pointing in your desired direction.

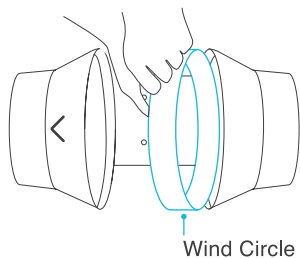


INSTALLATION

MOUNTING

STEP 7

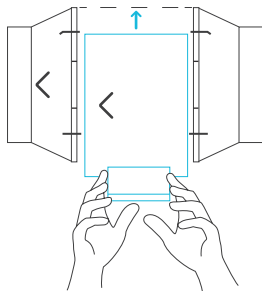
Place the wind circle back into the intake flange.



STEP 8

Slide the motor box back into the flange bracket, making sure its airflow arrow is pointing in the same direction as the flange bracket's arrow.

Screw the bolts back into the plastic rings to secure the motor box to the flange bracket.



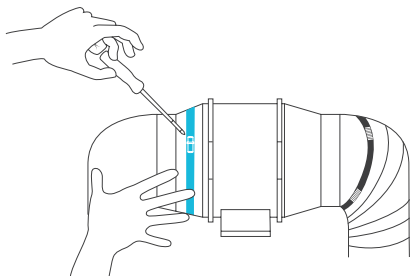
INSTALLATION

MOUNTING

STEP 9

If installing ducting, use duct clamps (sold separately) to secure it to either end of the duct fan, making sure there is a tight seal.

Tighten the duct clamps using a flathead screwdriver.

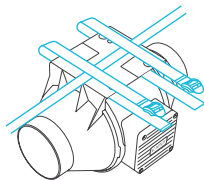


INSTALLATION

HANGING - STRAPS

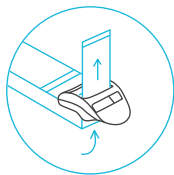
STEP 1

Loop the strap around the bracket and a pole.



STEP 2

Slip the strap through the inner ladder lock slot from the bottom.

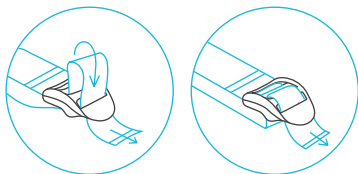


INSTALLATION

HANGING - STRAPS

STEP 3

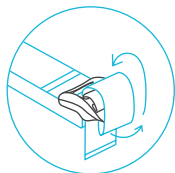
Route the strap into the outer ladder lock slot from the top. Adjust the length of the completed loop as needed.



Adjust to size

STEP 4

Tuck the loose end through the center gap of the ladder lock to secure the loop.



Loop through middle
to lock in place

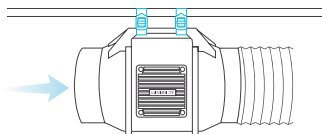
INSTALLATION

HANGING - STRAPS

STEP 5(a) - Hanging Downward

Let the fan hang by the pole once the straps are secure.

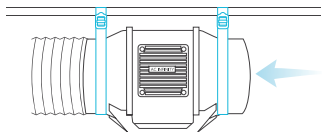
Make sure the fan's airflow arrow is pointing towards your desired direction.



STEP 5(b) - Hanging Upward

To hang the fan right-side up, loop and tighten the straps, as shown in steps 1-4, around the pole.

Hang the fan by the duct flanges to secure it.

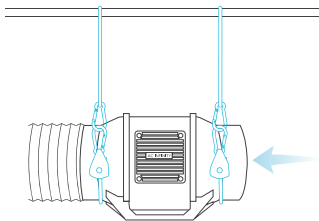


INSTALLATION

HANGING - ROPE CLIPS

HANGING UPWARD

If installing with rope hangers (sold separately), loop the ropes around the flanges and tighten the rope to secure the fan.

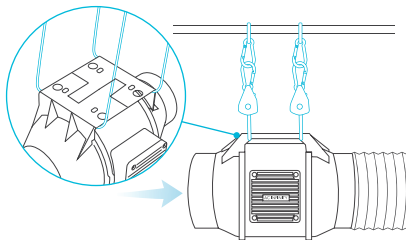


HANGING DOWNWARD

Loop the two rope hangers around a pole and the fan's bracket.

Clip the carabiners onto each other. Shorten the loops as needed.

Make sure the fan's airflow arrow is pointing towards your desired direction.

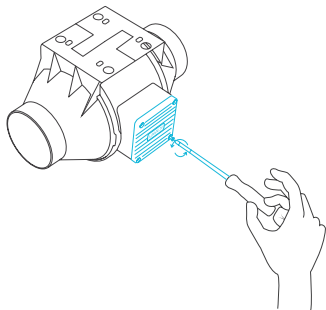


INSTALLATION

MOTOR CAP

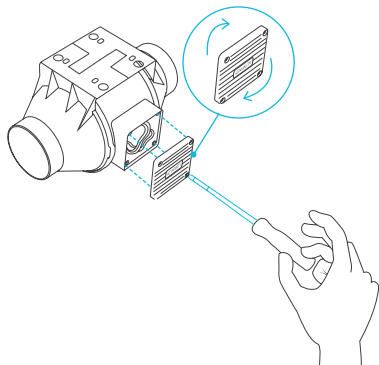
STEP 1

Unscrew the motor cap using a screwdriver.



STEP 2

Rotate the motor cap to your desired orientation. Reapply the screws.



Rotating the motor cap will not void your warranty.

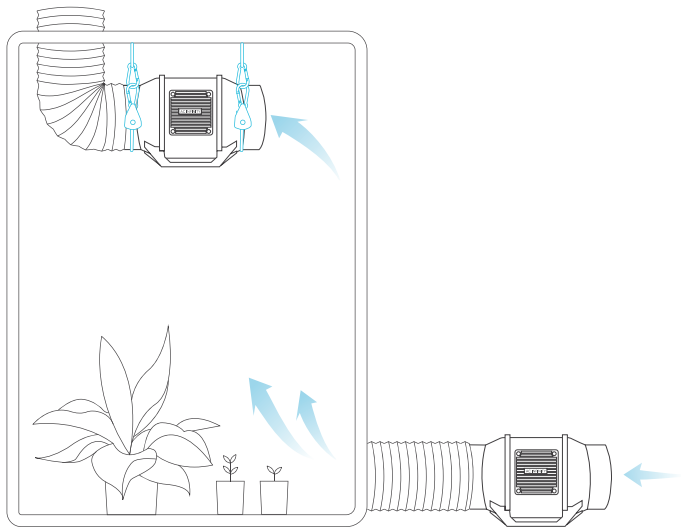
INSTALLATION

CONFIGURATION SETUP

INTAKE AND EXHAUST

This fan can be used as either an intake fan or an exhaust fan in grow rooms and larger grow tents. To achieve optimal whole space ventilation, the intake fan or opening - if not using a fan - must be situated at a bottom corner of your grow space. The exhaust fan must be hung (shown below) or mounted at the highest opposite corner possible.

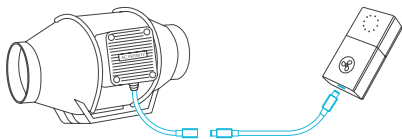
Make sure the intake fan's airflow arrow is pointing towards your grow space and the exhaust fan's arrow points away from your grow space.



POWERING AND SETUP

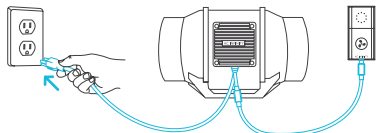
STEP 1

Plug the duct fan's UIS connector into the speed controller.



STEP 2

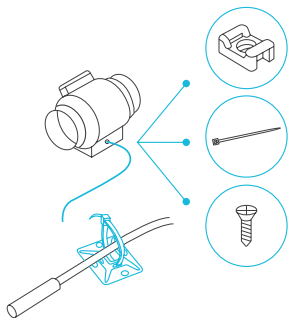
Plug the fan's power cord into an AC power outlet to power the fan and controller.



STEP 3

You may use the included tie mounts, wood screws, and wire ties to manage the cords.

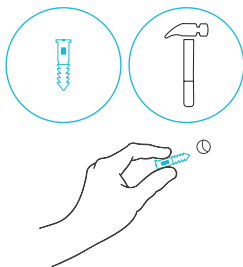
Secure the tie mounts onto a surface using the wood screws or adhesive backing. Loop the wire ties around the cords into the tie mounts.



CONTROLLER MOUNTING

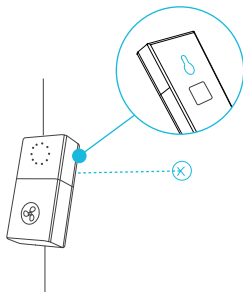
STEP 1 — WALL MOUNTING

Locate a spot free of obstruction and secure the anchor into your wall. Twist the wood screw into the anchors.



STEP 2 — WALL MOUNTING

Hang the controller onto the screw using the hole on the backside.



CONTROLLER MOUNTING

MAGNET MOUNTING

Mount the controller using the magnet located on its backside.

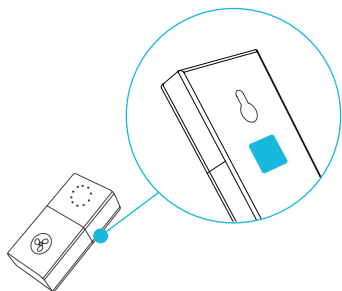
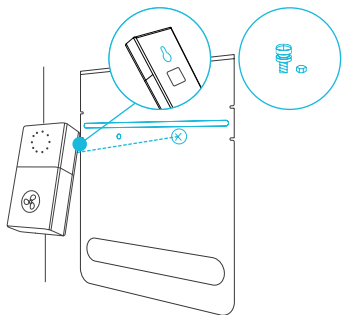


PLATE MOUNTING*

Screw the controller plate bolts into the slit on the upper half of the plate.

Hang the controller onto the bolts using the hole on the backside.



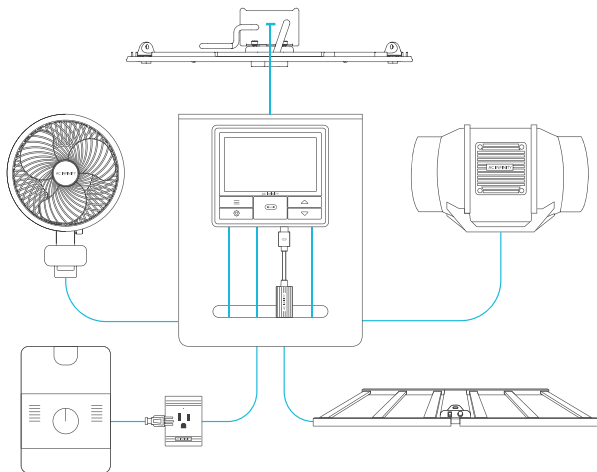
*Controller plate not included

UIS™ PLATFORM

The UIS™ platform enables you to connect a single central controller with several grow devices simultaneously. By creating this fully integrated system, you can power and program all your devices together or separately for optimized grow tent management.

Your grow system can be regulated using your controller hub or remotely on the AC Infinity app (paired with compatible controllers), where you will have access to automation programming and climate data.

You can also connect your favorite grow light and outlet device to integrate them into the UIS platform using our RJ11/12 adapter and control plug module.

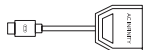


Central controller and grow devices will be sold separately and may still be in development at the time of your purchase of this product.

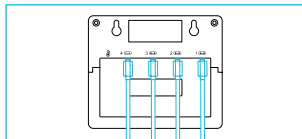
UIS™ COMPATIBILITY

MOLEX ADAPTER

Use the included Molex adapter to plug inline fans with 4-pin Molex connectors into this controller. Plug your fan's Molex connector into the adapter. Then plug the adapter into the controller.

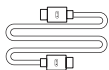


UIS M - 4PIN F
ADAPTER

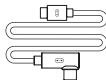


EXTENSION CABLE

Use male-to-male UIS extension cords to connect devices with female UIS ports at an extended range from your controller. Included with UIS-compatible devices.



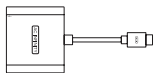
UIS M - M
CORD



UIS M - M
CLIP FAN CORD

EXPANSION SPLITTER*

The expansion splitter will allow you to connect 4 devices to a single port and can support additional splitters to create up to 3 tiers of expansion ports. Intended for exclusive use with AC Infinity controllers with UIS ports.



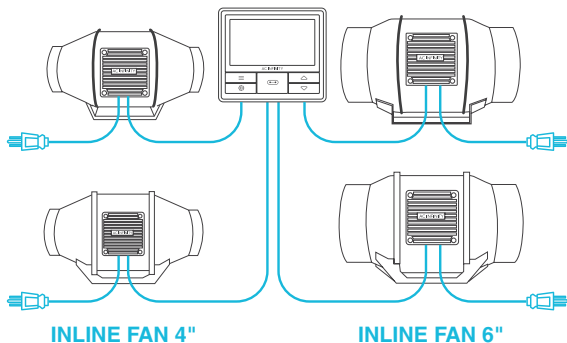
UIS M - F
4 PORT SPLITTER

*Not included

ADDING MORE FANS

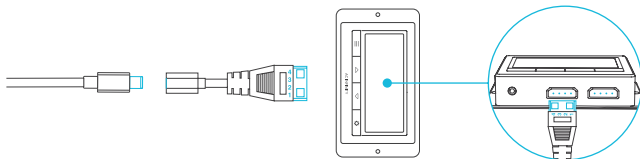
The CONTROLLER 69 PRO (sold separately) is built with four ports that enable you to power and control multiple fans at the same time. Compatible with inline fans with EC motors only. See image below for a sample configuration.

Multi-Fan Connection



MOLEX ADAPTER

Use the included UIS to 4-pin Molex adapter to connect your fan to the Universal Controller (not included). Plug your fan's UIS connector into the adapter. Then plug the adapter into your controller.



ADDING MORE DEVICES

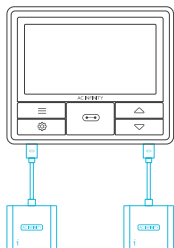
USING THE SPLITTER

Each controller port can support mix-and-matched devices regardless of their size.

When using a 4-port splitter, plug your first device into Port 1 for the controller to recognize as the primary device.

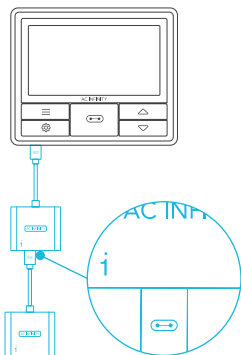
All other devices plugged into the splitter will follow programming intended for the device plugged into Port 1.

Splitters are not included.



EXTENDING THE CHAIN

When plugging additional splitters into Ports 2-4, all devices plugged into this chain must be of the same series (ex. CLOUDLINE of any size) regardless of the length of the splitter chain.



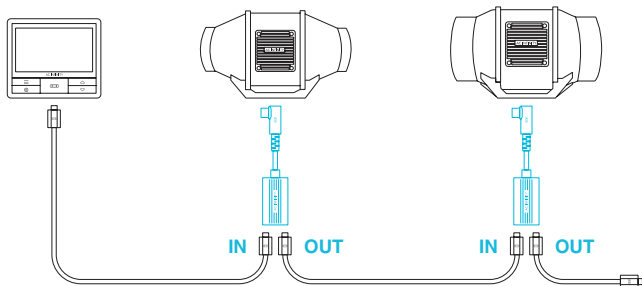
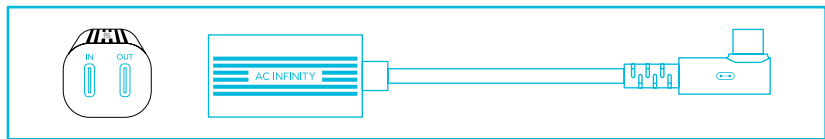
ADDING MORE DEVICES

DAISY-CHAINING

Each of the included controller's ports can support up to 20 devices using a daisy-chain adapter (not included). All devices must be from the same series but can be of differing sizes.

Plug the male end of the daisy-chain adapter into your device.

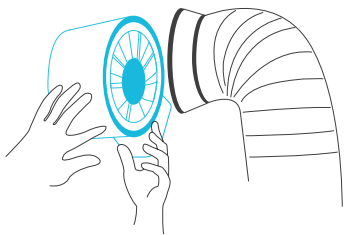
Connect your UIS controller to the daisy-chain adapter's INPUT port using a M-M connector cord. Using an extension cord, attach the daisy-chain adapter's OUTPUT port to another adapter's INPUT port. You can also link the OUTPUT port to another UIS device to end the chain.



CLEANING

STEP 1

Remove the motor box from the mounting flange. Refer to steps 1-2 on page 11 to learn how to remove the motor box.



STEP 2

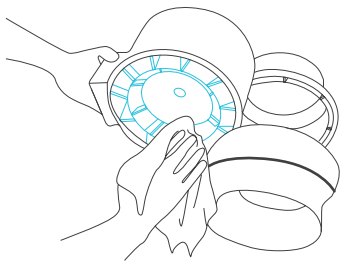
Use a damp cloth to clear the impeller and fan blades of any dust and debris. Remove the wind circle in between the motor box and input flange.



CLEANING

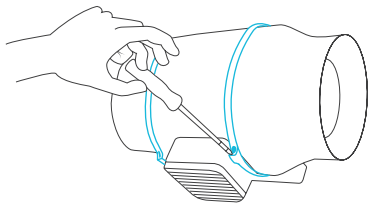
STEP 3

Clear the stator blades of any dust and debris on the opposite end. Clean the area inside the output and exhaust flanges.



STEP 4

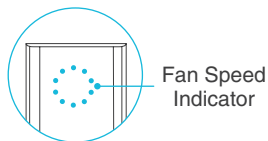
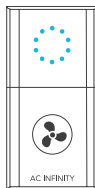
Secure the motor box onto the mounting flanges. Refer to steps 7-9 on page 14-15 to learn how to secure the motor box.



PROGRAMMING

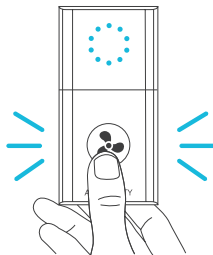
FAN SPEED ADJUSTING

The controller features a single button that controls the fan speed from 0-10. Pressing the speed button increases the fan speed in one unit increments. Pressing the button at the 10 setting will set the fan speed back to 0.



POWERING ON/OFF

Press the button to turn your fan on. Hold the button to turn your fan off. Pressing it again will turn the fan on at its last speed setting.



CLOUDLINE FAQ

Q: I am missing my controller. It wasn't included in my package!

A: Please refer to page 9 for an image of what your controller should look like. Your controller should be neatly slotted in the box by this product manual.

Q: Where is the best place to position the sensor probe?

A: Place the sensor probe as close as possible to the hottest or most humid spot in your space.

Q: Do I need to remove the plastic cap from the probe?

A: Yes. You will need to remove the plastic cap so the probe can accurately read climate conditions.

Q: Can I mount this inline duct fan vertically?

A: Yes. The CLOUDLINE can be mounted in any orientation, including vertically.

Q: Will I be able to hardwire this fan to my own controller or thermostat?

A: We do not recommend hardwiring or splicing our fan's power wires. Such modifications may compromise electrical safety and will void this product's warranty.

Q: Do I need to use a power converter if I'm outside the US?

A: This product's voltage range is 100-240V AC. You may need a simple travel adapter to plug it into a foreign socket, or a power converter if your country uses a different voltage.

CLOUDLINE FAQ

Q: Does the controller retain its settings after power is shut off?

A: Yes. If the controller's power is cut off and is powered on afterwards, your settings will remain.

Q: I'm not getting enough airflow even after setting the fan speed to 10. What can I do?

A: Bends in ducting will reduce your fan's CFM performance. To retain airflow, you may straighten the ducting and eliminate as many bends as possible.

Q: Should I use this inline duct fan as an intake or an exhaust fan?

A: The CLOUDLINE is primarily used as an exhaust fan, but can be used as an intake fan as well. You may use this fan as an intake fan if you need fresh air into your space.

Q: Can I connect different sized fans to the same controller?

A: Please refer to pages 27-29 for details on connecting fans together.

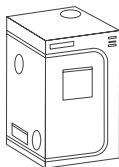
Q: I'm hanging my fan upside down in my grow tent, can I rotate its motor box plate?

A: Yes. Use a screw driver to unscrew the motor cap. Rotate it to your desired orientation and reapply the screws.

AC INFINITY PRODUCTS

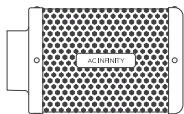
Advance Grow Tents

The CLOUDLAB series is a line of grow tents designed to create ideal growing conditions and facilitate indoor plant cultivation year-round. Features 2000D thick oxford canvas lined with inner diamond patterned mylar that maximizes grow light luminosity, and a reinforced frame with 150 lb. weight capacity. Includes a mounting plate to install your AC Infinity controller onto.



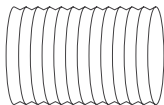
Carbon Filter

The duct carbon filter is designed to eliminate odors and chemicals for grow tents and hydroponic spaces. It utilizes premium grade Australian charcoal that features greater absorption power and a longer lifespan. Enables maximum airflow to pass through as part of an intake or exhaust system.



Ducting Tubes

The four-layer ducting tube is used to direct airflow, designed for ventilation systems in applications like HVAC, dryers, and grow rooms. It is highly durable and flexible, and can be used anywhere from tight spaces to wide open areas.



Discover the latest innovations in environmental controls at [acinfinity.com](https://www.acinfinity.com)

WARRANTY

This warranty program is our commitment to you, the product sold by AC Infinity will be free from defects in manufacturing for a period of two years from the date of purchase. If a product is found to have a defect in material or workmanship, we will take the appropriate actions defined in this warranty to resolve any issues.

The warranty program applies to any order, purchase, receipt, or use of any products sold by AC Infinity or our authorized dealerships. The program covers products that have become defective, malfunctioned, or expressively if the product becomes unusable. The warranty program goes into effect on the date of purchase. The program will expire two years from the date of purchase. If your product becomes defective during that period, AC Infinity will replace your product with a new one or issue you a full refund.

The warranty program does not cover abuse or misuse. This includes physical damage, submersion of the product in water, incorrect installation such as wrong voltage input, and misuse for any reason other than intended purposes. AC Infinity is not responsible for consequential loss or incidental damages of any nature caused by the product. We will not warrant damage from normal wear such as scratches and dings.

Contact our dealers department at dealers@acinfinity.com or (626) 838-4656 for more information about our dealers and distributors program. Contact our customer service department at support@acinfinity.com or 626-923-6399 for product and warranty assistance. Our business hours are Monday through Friday, 9:00 am to 5:00 pm PST.



If you have any issues with this product, contact us and we'll happily resolve your problem or issue a full refund!

COPYRIGHT © 2023 AC INFINITY INC. ALL RIGHTS RESERVED

No part of the materials including graphics or logos available in this booklet may be copied, photocopied, reproduced, translated or reduced to any electronic medium or machine readable form, in whole or in part, without specific permission from AC Infinity Inc.

www.acinfinity.com