



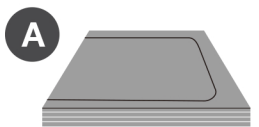
# Grow Tent Assembly Instructions

1

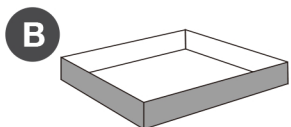
Connect the grow tent framework ensuring the poles are seated properly in the corner connectors. It may be necessary to gently twist the poles back and forth to make a secure connection.

Note: Having a friend assist you with the assembly can be very helpful

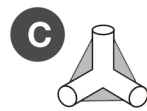
## Parts List:



Grow Tent Canvas



Tent Spill Trays



Corner Adapters

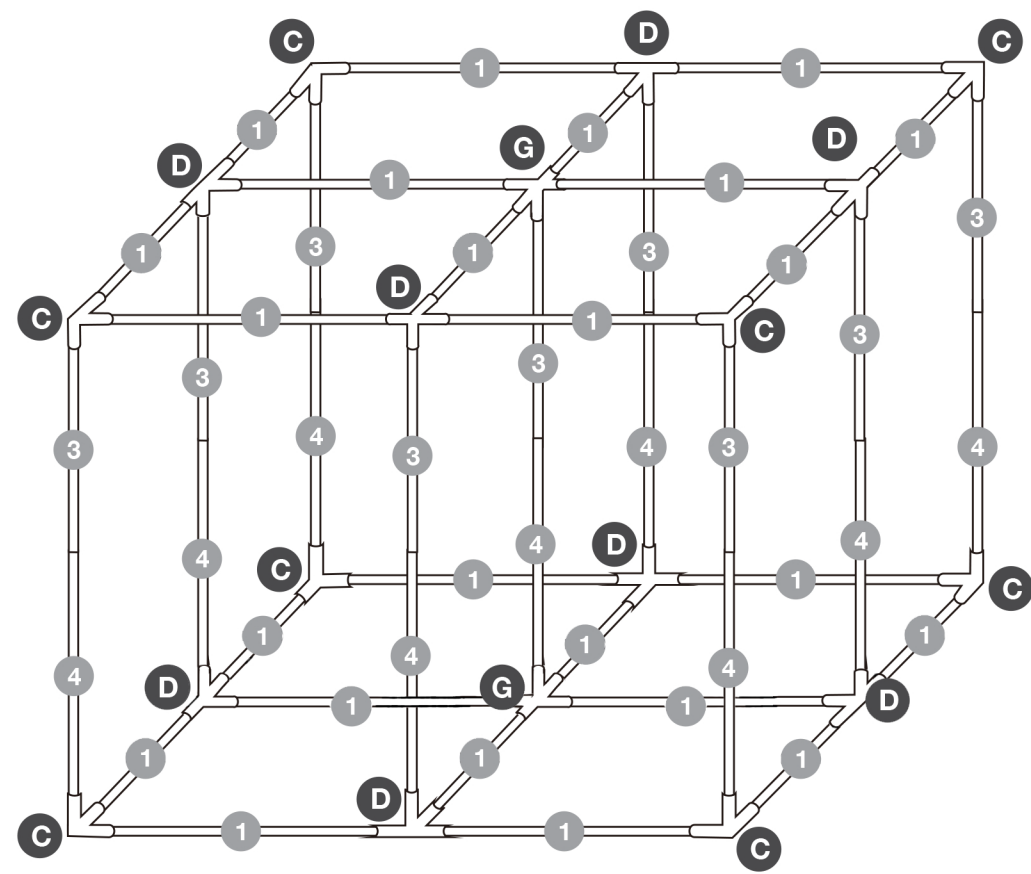


Center Connectors



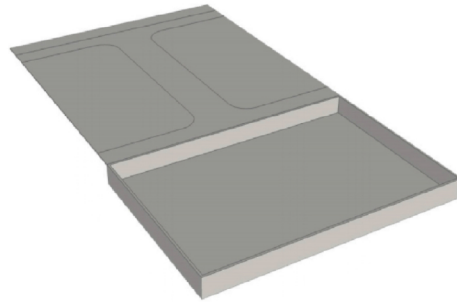
Floor Center Connectors

- |   |  |        |
|---|--|--------|
| 1 |  | 24 pcs |
| 3 |  | 9 pcs  |
| 4 |  | 9 pcs  |
| 5 |  | 4 pcs  |
| 6 |  | 4 pcs  |



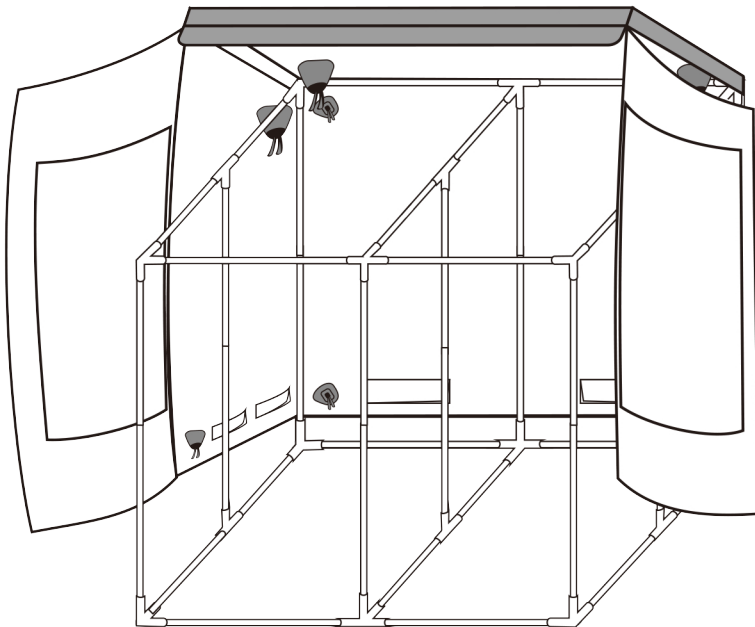
**2**

Lay out the grow tent outer canvas, making sure that all zippers are completely undone as shown in the left image below.



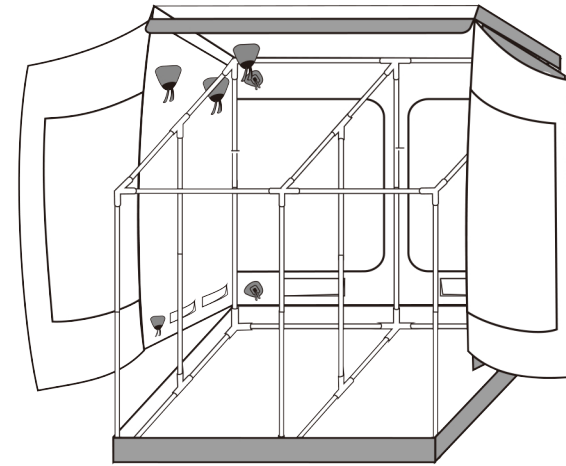
**3**

Gently pull up the top of the tent canvas onto and over the tent frame. Make sure the top corners of the frame are seated fully into the canvas corners.



**4**

Now pull the bottom of the tent canvas around the bottom of the tent frame and ensure the corners are seated fully.



**5**

Hang the top support bars from the top of the tent frame by placing the support bar with shorter “ears” first, then placing the second bar with longer “ears” second.

**6**

Finally, install the Tent Spill Tray into the bottom of the tent.

